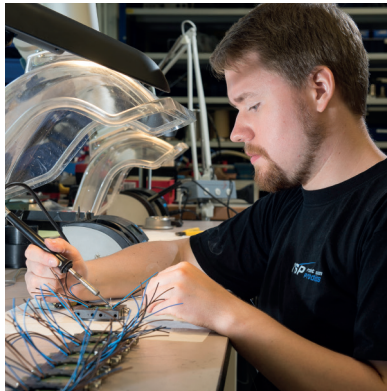
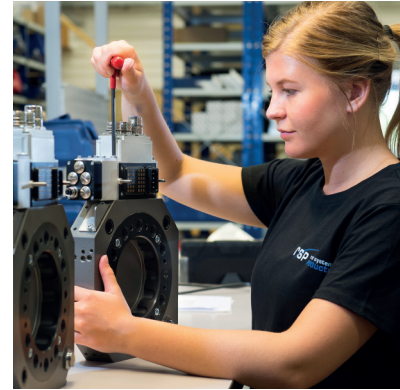
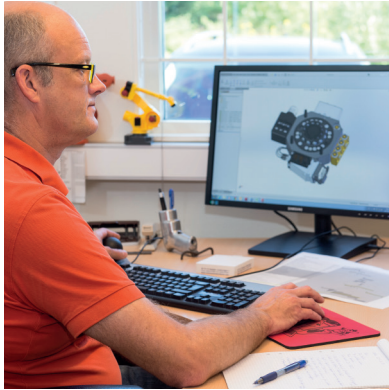


Robot System Products

Spot welding



ROBOT SYSTEM PRODUCTS HAS A WIDE RANGE OF ROBOT PERIPHERAL PRODUCTS:
Tool changers | Swivels | Swivels with tool changer | Grippers | Hose packages | Valve units | Tool systems



The company

Robot System Products is a front-rank provider of peripheral products for high performance robot applications. We provide complete tool system solutions for your robot installations, aiming to improve your productivity with the most reliable and cost-effective tooling on the market. Continuously we explore emerging technologies, working with leading edge design.

Local presence worldwide

As a global company, Robot System Products has subsidiaries and distribution partners in more than 20 countries. Our headquarters is located in Västerås, Sweden.

Products

Our products are available for all major robot brands and come with complete documentation.

We offer:

- Tool changers
- Swivels
- Swivels with tool changer
- Grippers
- Hose packages
- Valve units
- Tool systems
- Tool stands

Contents

TOOL CHANGERS AND TOOL ATTACHMENTS	4
TC/TA240	6
TC/TA275	10
TC/TA350	14
TC/TA480	22
TC/TA500	24
TC/TA720	28
TC/TA1000	30
SWIVELS WITH TOOL CHANGERS AND TOOL ATTACHMENTS	34
STC/TA250	36
STC/TA350	38
SWIVELS	44
S250	46
S350	48
ADAPTATIONS	50
Adaptation kits for tool changers	52
Adaptation kits for swivels and swivels with tool changers	53
Options for tool changers, swivels with tool changers and swivels	54
HOW TO ORDER	56
DRESSING ROBOTS WORLDWIDE	58

See our separate catalogs for **GRIPPERS** and the whole **PRODUCT RANGE**



Tool changers and tool attachments

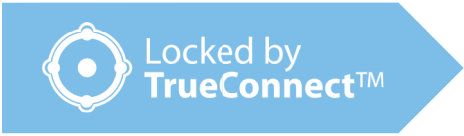
Tool changers

Robot System Products tool changers are designed to maximize the flexibility and reliability of your robot fleet. Robustness and high safety are combined with low weight and compactness. Depending on model and options, electrical signals, weld and servo power, data, water and compressed air are transferred from the robot side to the tool.

The patented locking device TrueConnect™ has a minimum of play and gives a practically, through the lifespan, absolute positioning repeatability. The principle behind the locking mechanism is the uniform distribution of load, obtained by pressing locking balls into spherical grooves. In consequence, substantially larger positional tolerances are accepted during docking.

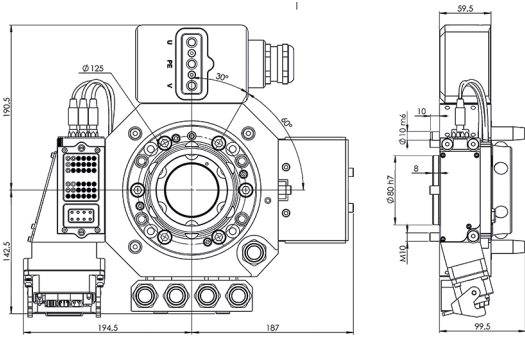
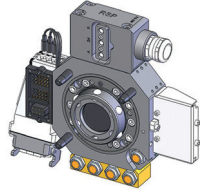
RSP Tool changers are designed to make it possible for you to perform tool changing operations continuously day out and day in.

- Robust design for high torque applications
- Fast docking with high tolerance
- Absolute positioning repeatability
- 3D-models for Robot CAD-systems
- Low maintenance and high uptime

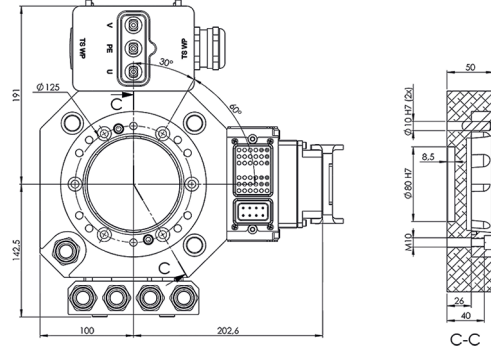
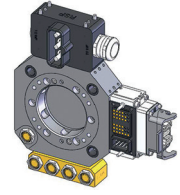


Spot welding tool changers and tool attachments for pneumatic gun

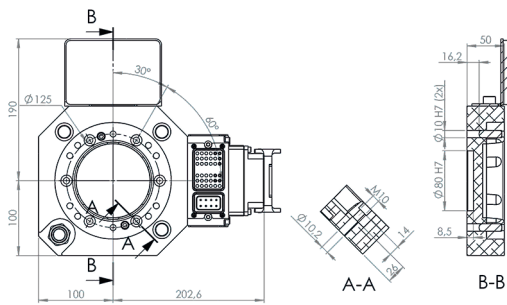
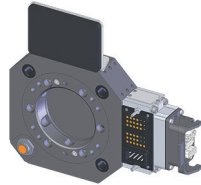
P6705
Tool changer TC240-SWP



P6707
Gun attachment TA240-SWP



P6709
Tool attachment TA240-SW/MH

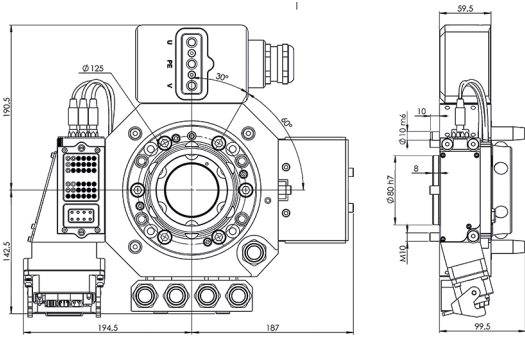
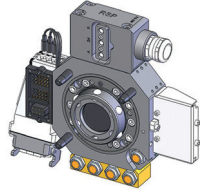


TC/TA240

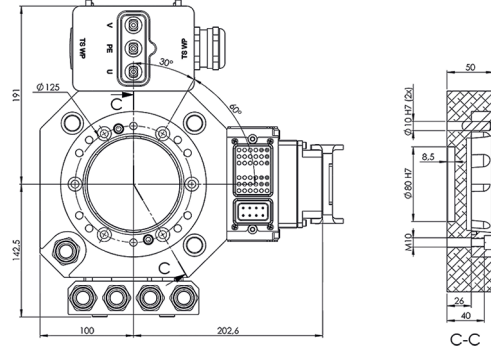
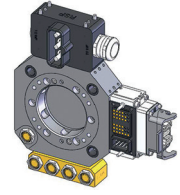
Type	TC240-SWP	TA240-SWP	TA240-SW/MH
Article number	P6705	P6707	P6709
Weight (kg)	13.4	8.8	6.0
Mechanical interface	ISO 9409-1 125-6-M10 (center tap both Ø63 and Ø80)		
Working temperature	+10°C – +60°C		
IP classification	IP54		
Maximum tool load			
Fz (static)	± 2400 N		
Mz (dynamic)	± 2000 Nm		
Mx/My (dynamic)	± 2400 Nm		
Air ducts			
Number of air ducts	1		
Max air pressure	10 bar		
Air flow	2000 l/min		
Air connection	G 1/2"		
Pneumatic valve	Integrated TC-valves	–	
Air quality	Oil-clean and waterless filtered air, with max 25µm particle content		
Air/water ducts with automatic shut off function			
Number of ducts	4	–	
Max air pressure	10 bar	–	
Air flow	2000 l/min	–	
Connection	G 1/2"	–	
Air quality	Oil-clean and waterless filtered air, with max 25µm particle content		
Max water pressure	10 bar	–	
Water flow	20 l/min	–	
Water connection	G 1/2"	–	
Water quality	Clean filtered with max 25µm particle content		
Electrical signals			
Number of signals	40	34	
Dedicated signals	1 x 24 V DC	–	
	1 x 0 V DC	–	
	1 TC Coupled	–	
	1 TC Uncoupled	–	
	2 TC-valves	–	
Max current	2 A	–	
Max voltage	60 V	–	
Connections	3-module Harting 10B		
Welding power			
Number of conductors	3	–	
Dedicated conductors	1 PE	–	
Max peak current	400 A	–	
Max continuous current	135 A	–	
Max voltage	690 V	–	
Connections	Cable gland (Dia 19–28mm)		

Spot welding tool changers and tool attachments for servo gun

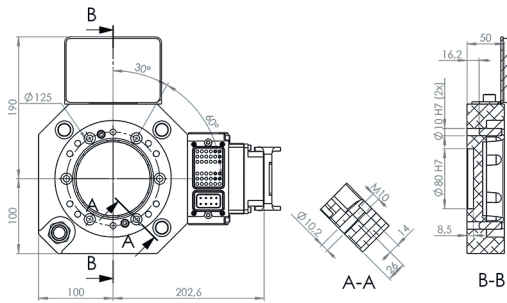
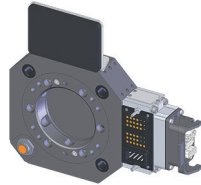
P6706
Tool changer TC240-SWS



P6708
Gun attachment TA240-SWS



P6709
Tool attachment TA240-SW/MH

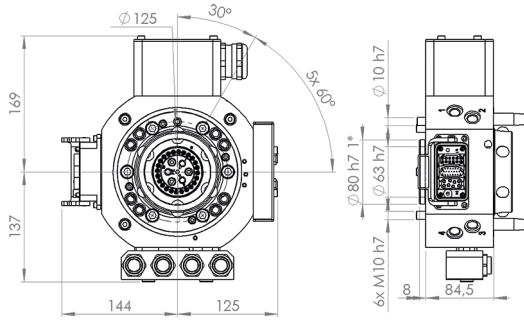


TC/TA240

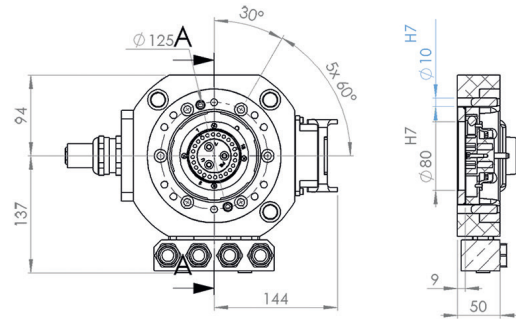
Type	TC240-SWS	TA240-SWS	TA240-SW/MH
Article number	P6706	P6708	P6709
Weight (kg)	12.4	8.9	6.0
Mechanical interface	ISO 9409-1 125-6-M10 (center tap both Ø63 and Ø80)		
Working temperature	+10°C – +60°C		
IP classification	IP54		
Maximum tool load			
Fz (static)	± 2400 N		
Mz (dynamic)	± 2000 Nm		
Mx/My (dynamic)	± 2400 Nm		
Air ducts			
Number of air ducts	1		
Max air pressure	10 bar		
Air flow	2000 l/min		
Air connection	G 1/2"		
Pneumatic valve	Integrated TC-valves	–	
Air quality	Oil-clean and waterless filtered air, with max 25µm particle content		
Air/water ducts with automatic shut off function			
Number of ducts	4	–	
Max air pressure	10 bar	–	
Air flow	2000 l/min	–	
Connection	G 1/2"	–	
Air quality	Oil-clean and waterless filtered air, with max 25µm particle content		
Max water pressure	10 bar	–	
Water flow	20 l/min	–	
Water connection	G 1/2"	–	
Water quality	Please check manual for detail		
Electrical signals			
Number of signals	40	34	
Dedicated signals	1 x 24V DC	–	
	1 x 0V DC	–	
	1 TC Opened	–	
	1 TC Closed	–	
	2 TC-valves	–	
Max current	2 A	–	
Max voltage	60 V	–	
Number of servo power	–	–	
Dedicated signals	–	–	
Max servo current	16 A	–	
Max servo voltage	690 V	–	
Connections	3-module Harting 10B		
Welding power			
Number of conductors	3	–	
Dedicated conductors	1 PE	–	
Max peak current	400 A	–	
Max continuous current	135 A	–	
Max voltage	690 V	–	
Connections	Cable gland (Dia 19–28mm)		

Spot welding tool changers and tool attachments for pneumatic gun

P6550
Tool changer TC275-SWP

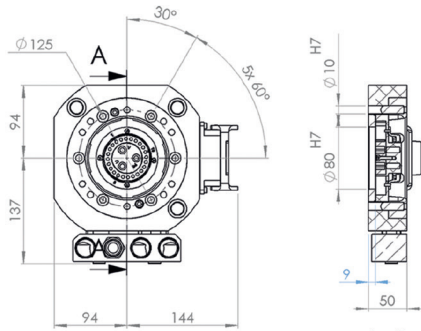


P6552
Gun attachment TA275-SWP



A-A

P6554
Tool attachment TA275-SWP/MH



A-A

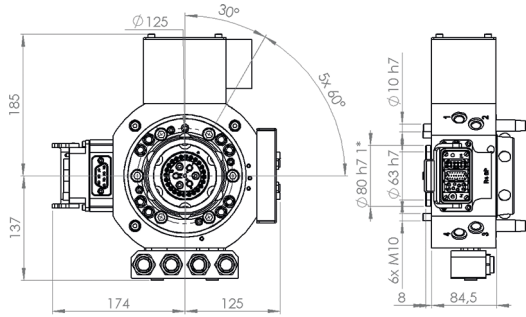
TC/TA275

*TC275 fits robots with centering diameter (d3) 63mm and 80mm

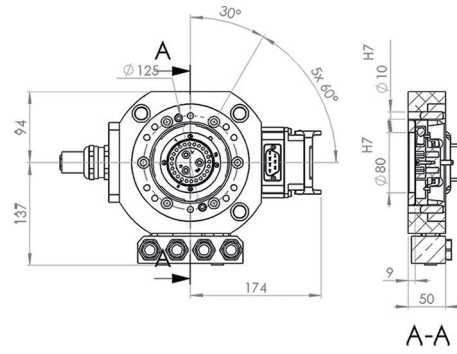
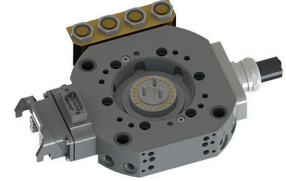
Type	TC275-SWP	TA275-SWP	TA275-SWP/MH
Article number	P6550	P6552	P6554
Weight (kg)	12.3	6.2	5.9
Mechanical interface	ISO 9409-1 125-6-M10*		
Working temperature	+10°C – +60°C		
IP classification	IP 54		
Maximum tool load			
Fz (static)	± 2000 N		
Mz (dynamic)	± 1250 Nm		
Mx/My (dynamic)	± 2000 Nm		
Air ducts			
Number of air ducts	8		
Max air pressure	10 bar		
Air flow	2000 l/min		
Air connection	G 1/4"		
Pneumatic valve	Integrated TC-valves	–	
Air quality	Oil-clean and waterless filtered air, with max 25µm particle content		
Air/water ducts with automatic shut off function			
Number of ducts	4	1	
Dedicated air ducts	1 TC Open/Close (6–10 bar)		
Max air pressure	10 bar		
Air flow	2500 l/min		
Connection	G 1/2"		
Air quality	Oil-clean and waterless filtered air, with max 25µm particle content		
Max water pressure	10 bar	–	
Water flow	20 l/min	–	
Water connection	G 1/2"	–	
Water quality	Please check manual for detail		–
Electrical signals			
Number of signals	29	23	
Dedicated signals	1 x 24 V DC		
	1 PE		
	1 TC Coupled	–	
	3 TC Opened	–	
	2 TC Valves	–	
Max current	2 A		
Max voltage	60 V		
Connections	3-module Harting 10B		
Welding power			
Number of conductors	3	–	
Dedicated conductors	1 PE	–	
Max peak current	400 A	–	
Max continuous current	135 A	–	
Max voltage	690 V	–	
Connections	MC TSS150	1 m 3 x 25mm ² cable, open end	

Spot welding tool changers and tool attachments for servo gun

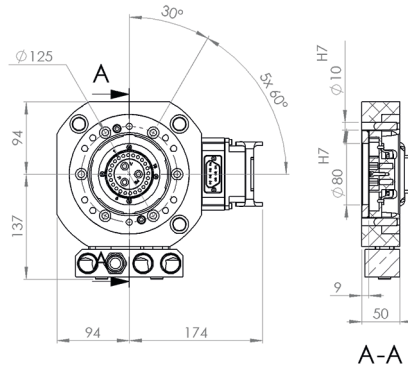
P6551
Tool changer TC275-SWS



P6553
Gun attachment TA275-SWS



P6555
Tool attachment TA275-SWS/
MH



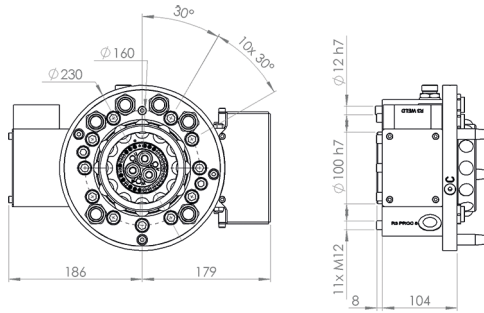
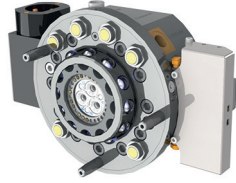
TC/TA275

*TC275 fits robots with centering diameter (d3) 63mm and 80mm

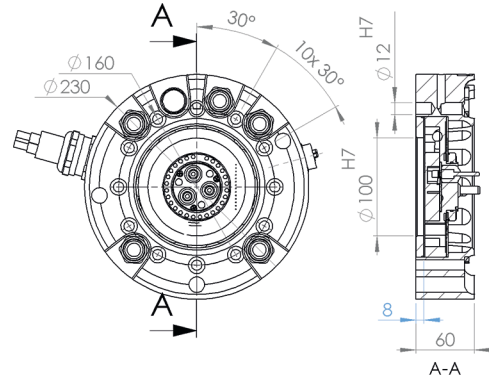
Type	TC275-SWS	TA275-SWS	TA275-SWS/MH
Article number	P6551	P6553	P6555
Weight (kg)	12.8	6.7	6.1
Mechanical interface	ISO 9409-1 125-6-M10*		
Working temperature	+10°C – +60°C		
IP classification	IP 54		
Maximum tool load			
Fz (static)	± 2000 N		
Mz (dynamic)	± 1250 Nm		
Mx/My (dynamic)	± 2000 Nm		
Air ducts			
Number of air ducts	8		
Max air pressure	10 bar		
Air flow	2000 l/min		
Air connection	G 1/4"		
Pneumatic valve	Integrated TC-valves	–	
Air quality	Oil-clean and waterless filtered air, with max 25µm particle content		
Air/water ducts with automatic shut off function			
Number of ducts	4	1	
Dedicated air ducts	1 TC Open/Close (6-10 bar)		
Max air pressure	10 bar		
Air flow	2500 l/min		
Connection	G 1/2"		
Air quality	Oil-clean and waterless filtered air, with max 25µm particle content		
Max water pressure	10 bar	–	
Water flow	20 l/min	–	
Water connection	G 1/2"	–	
Water quality	Please check manual for detail		–
Electrical signals			
Number of signals	32	26	23
Dedicated signals	1 x 24 V DC		
	1 PE		
	1 TC Coupled	–	
	3 TC Opened	–	
	2 TC Valve	–	
Max current	2 A		
Max voltage	60 V		
Number of servo power	4	–	
Dedicated signals	1 PE	–	
Max servo current	15 A	–	
Max servo voltage	690 V	–	
Connections	3-module Harting 10B		
Welding power			
Number of conductors	3	–	
Dedicated conductors	1 PE	–	
Max peak current	350 A	–	
Max continuous current	135 A	–	
Max voltage	690 V	–	
Connections	MC TSS150	1m 3 x 25mm ² cable, open end	–

Spot welding tool changers and tool attachments for pneumatic gun

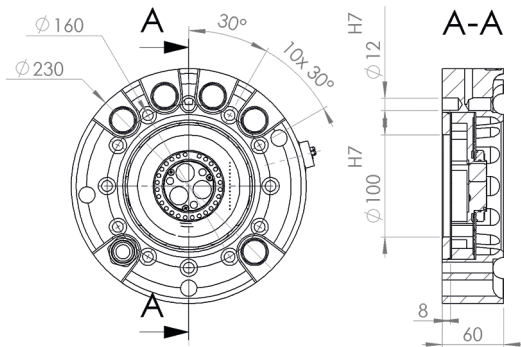
P6633A
Tool changer TC350-SWP



P6622A
Gun attachment TA350-SWP



P6624A
Tool attachment TA350-SW/
MH

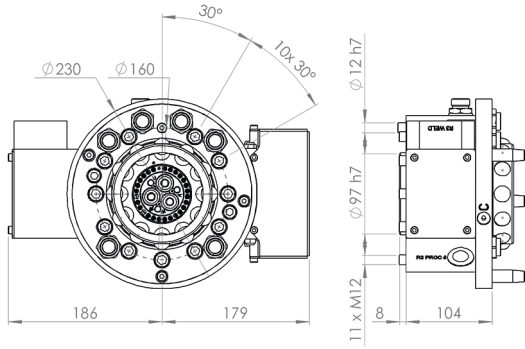


TC/TA350

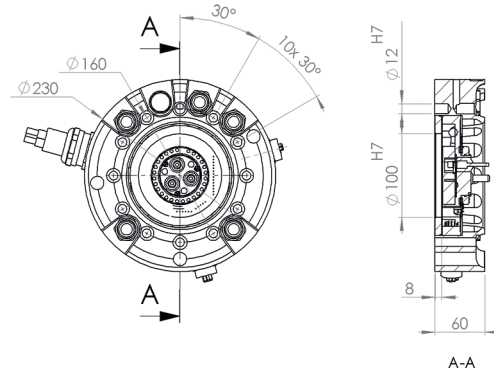
Type	TC350-SWP	TA350-SWP	TA350-SW/MH
Article number	P6633A	P6622A	P6624A
Weight (kg)	18.8	7.5	7.3
Mechanical interface	ISO 9409-1 160-11-M12		
Working temperature	+10°C – +60°C		
IP classification	IP 54		
Maximum tool load			
Fz (static)	± 3500 N		
Mz (dynamic)	± 3500 Nm		
Mx/My (dynamic)	± 3500 Nm		
Air/water ducts with automatic shut off function			
Number of ducts	5		1
Dedicated air ducts	1 (6-10 bar for tool change)		
Max air pressure	10 bar		
Air flow	2000 l/min		
Connection	G 1/2"		
Pneumatic valve	Integrated TC-valves		–
Air quality	Oil-clean and waterless filtered air, with max 25µm particle content		
Max water pressure	10 bar		
Water flow	20 l/min		–
Water connection	G 1/2"		
Water quality	Please check manual for detail		
Electrical signals			
Number of signals	16		12
Dedicated signals	1 x 24 V DC		
	1 x 0 V DC		
	1 TC Coupled		1 PE
	1 TC Opened		–
	2 TC Valves		–
Max current	2 A		
Max voltage	60 V		
Connections	3-module Harting 10B		19S Souriau
Welding power			
Number of conductors	3		–
Dedicated conductors	1 PE		–
Max peak current	400 A		–
Max continuous current	135 A		–
Max voltage	690 V		–
Connections	MCTSS150	1m 3 x 25mm ² cable, open end	–

Spot welding tool changers and tool attachments for pneumatic gun

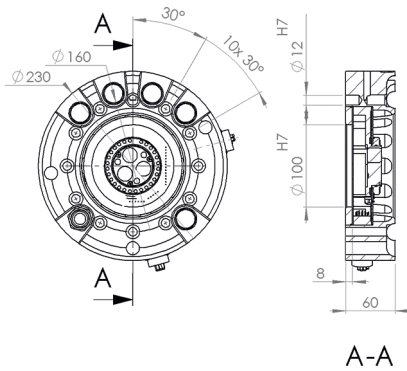
P6649A
Tool changer TC350-SWP



P6650A
Gun attachment TA350-SWP



P6651A
Tool attachment TA350-SWP/
MH

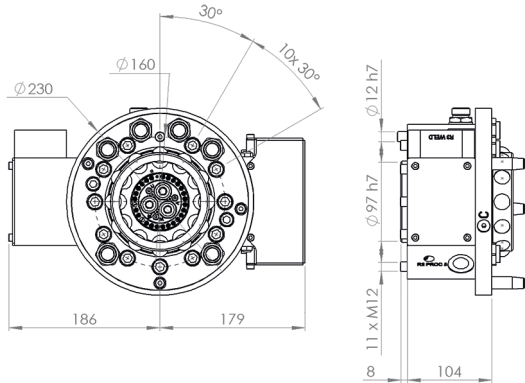
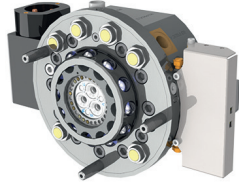


TC/TA350

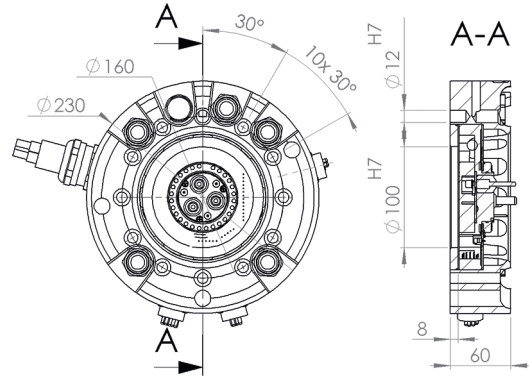
Type	TC350-SWP	TA350-SWP	TA350-SWP/MH
Article number	P6649A	P6650A	P6651A
Weight (kg)	16.0	8.0	7.4
Mechanical interface	ISO 9409-1 160-11-M12		
Working temperature	+10°C – +60°C		
IP classification	IP 54		
Maximum tool load			
Fz (static)	± 3500 N		
Mz (dynamic)	± 3500 Nm		
Mx/My (dynamic)	± 3500 Nm		
Air/water ducts with automatic shut off function			
Number of ducts	5		1
Dedicated air ducts	1 (6–10 bar for tool change)		
Max air pressure	10 bar		
Air flow	2000 l/min		
Connection	G 1/2"		
Pneumatic valve	Integrated TC-valves		–
Air quality	Oil-clean and waterless filtered air, with max 25µm particle content		
Max water pressure	10 bar		
Water flow	20 l/min		
Water connection	G 1/2"		
Water quality	Please check manual for detail		
Electrical signals			
Number of signals	29		25
Dedicated signals	1 x 24 V DC		
	1 x 0 V DC		
	1 TC Coupled		1 PE
	1 TC Opened		–
	2 TC-valves		–
Max current	2 A		
Max voltage	60 V		
Connections	3-module Harting 10B		19S Souriau
Welding power			
Number of conductors	3		–
Dedicated conductors	1 PE		–
Max peak current	400 A		–
Max continuous current	135 A		–
Max voltage	690 V		–
Connections	MC TSS150	1m 3 x 25mm ² cable, open end	–

Spot welding tool changers and tool attachments for servo gun

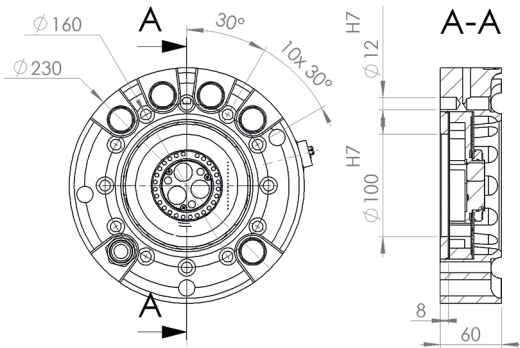
P6634A
Tool changer TC350-SW5



P6623A
Gun attachment TA350-SW5



P6624A
Tool attachment TA350-SW/
MH

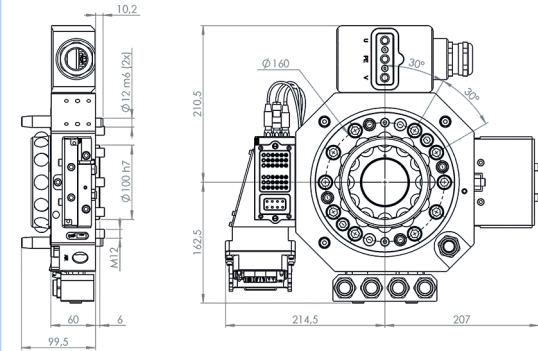
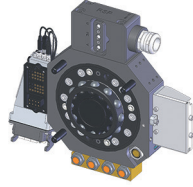


TC/TA350

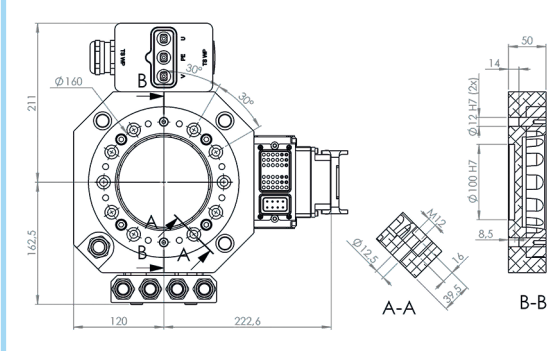
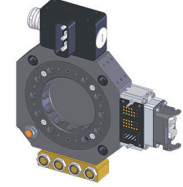
Type	TC350-SWS	TA350-SWS	TA350-SW/MH
Article number	P6634A	P6623A	P6624A
Weight (kg)	16.0	8.1	7.3
Mechanical interface	ISO 9409-1 160-11-M12		
Working temperature	+10°C – +60°C		
IP classification	IP 54		
Maximum tool load			
Fz (static)	± 3500 N		
Mz (dynamic)	± 3500 Nm		
Mx/My (dynamic)	± 3500 Nm		
Air/water ducts with automatic shut off function			
Number of ducts	4		1
Dedicated air ducts	1 (6–10 bar for tool change)		
Max air pressure	10 bar		
Air flow	2000 l/min		
Connection	G 1/2"		
Pneumatic valve	Integrate TC-valves		–
Air quality	Oil-clean and waterless filtered air, with max 25µm particle content		
Max water pressure	10 bar		
Water flow	20 l/min		–
Water connection	G 1/2"		
Water quality	Please check manual for detail		
Electrical signals			
Number of signals	29	24	12
Dedicated signals	1 x 24 V DC		
	1 x 0 V DC		
	1 TC Coupled		1 PE
	1 TC Opened		–
	2 TC valves		–
Max current	2 A		
Max voltage	60 V		
Number of servo power	3		–
Dedicated signals	–		
Max servo current	15 A		–
Max servo voltage	690 V		–
Connections	3-module Harting 10B	3 x 19S Souriau	19S Souriau
Welding power			
Number of conductors	3		–
Dedicated conductors	1 PE		–
Max peak current	400 A		–
Max continuous current	135 A		–
Max voltage	690 V		–
Connections	MC TSS150	1 m 3 x 25 mm ² cable, open end	–

Spot welding tool changers and tool attachments for pneumatic gun

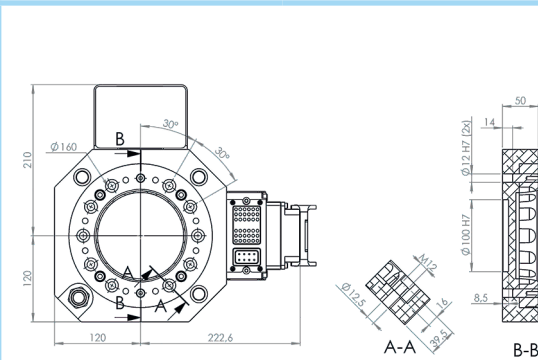
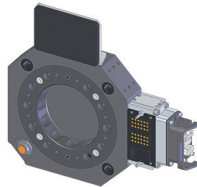
P6805
Tool changer TC480-SWP



P6807
Gun attachment TA480-SWP



P6809
Tool attachment TA480-SW/
MH

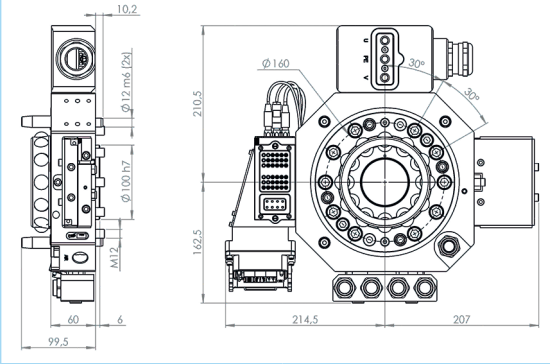
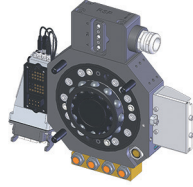


TC/TA480

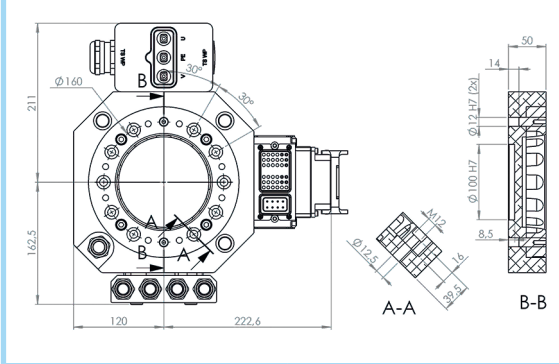
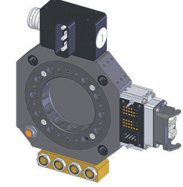
Type	TC480-SWP	TA480-SWP	TC480-SW/MH
Article number	P6805	P6807	P6809
Weight (kg)	17.1	12.0	8.6
Mechanical interface	ISO 9409-1 160-11-M12		
Working temperature	+10°C – +60°C		
IP classification	IP54		
Maximum tool load			
Fz (static)	± 5000 N		
Mz (dynamic)	± 3500 Nm		
Mx/My (dynamic)	± 5000 Nm		
Air ducts			
Number of air ducts	1		
Max air pressure	10 bar		
Air flow	2000 l/min		
Air connection	G1/2"		
Pneumatic valve	Integrated TC-valves	–	
Air quality	Oil-clean and waterless filtered air, with max 25µm particle content		
Air/water ducts with automatic shut off function			
Number of ducts	4	–	
Max air pressure	10 bar	–	
Air flow	2000 l/min	–	
Connection	G1/2"	–	
Air quality	Oil-clean and waterless filtered air, with max 25µm particle content		
Max water pressure	10 bar	–	
Water flow	20 l/min	–	
Water connection	G1/2"	–	
Water quality	Clean filtered with max 25µm particle content		
Electrical signals			
Number of signals	40	34	
Dedicated signals	1 x 24 V DC	–	
	1 x 0 V DC	–	
	1 TC Opened	–	
	1 TC Closed	–	
	2 TC-valves	–	
Max current	2 A	–	
Max voltage	60 V	–	
Connections	3-module Harting 10B		
Welding power			
Number of conductors	3	–	
Dedicated conductors	1 PE	–	
Max peak current	400 A	–	
Max continuous current	135 A	–	
Max voltage	690 V	–	
Connections	Cable gland (Dia 19–28mm)		Cable

Spot welding tool changers and tool attachments for servo gun

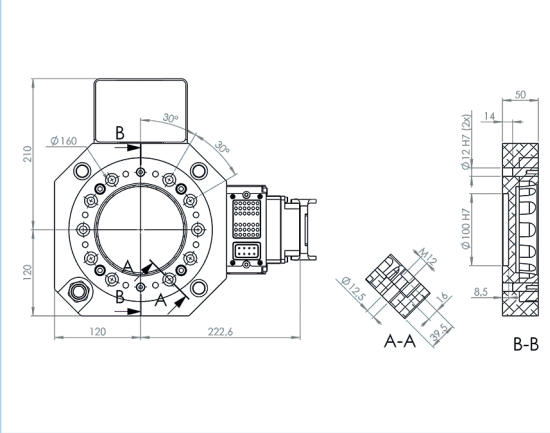
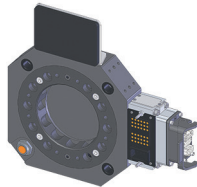
P6806
Tool changer TC480-SW5



P6808
Gun attachment TA480-SW5



P6809
Tool attachment TA480-SW/
MH

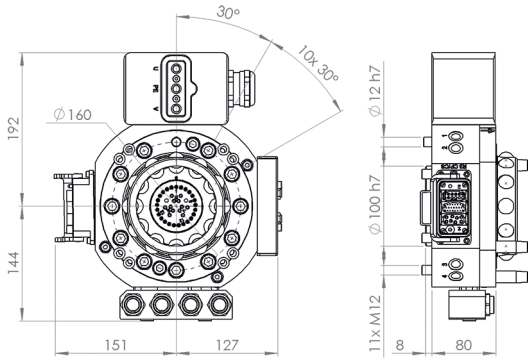


TC/TA480

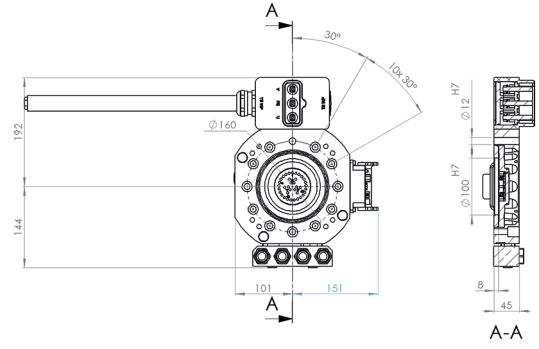
Type	TC480-SWS	TA480-SWS	TA480-SW/MH
Article number	P6806	P6808	P6809
Weight (kg)	17.1	12.0	8.6
Mechanical interface	ISO 9409-1 160-11-M12		
Working temperature	+10°C – +60°C		
IP classification	IP54		
Maximum tool load			
Fz (static)	± 5000 N		
Mz (dynamic)	± 3500 Nm		
Mx/My (dynamic)	± 5000 Nm		
Air ducts			
Number of air ducts	1		
Max air pressure	10 bar		
Air flow	2000 l/min		
Air connection	G 1/2"		
Pneumatic valve	Integrated TC-valves	–	
Air quality	Oil-clean and waterless filtered air, with max 25µm particle content		
Air/water ducts with automatic shut off function			
Number of ducts	4	–	
Max air pressure	10 bar	–	
Air flow	2000 l/min	–	
Connection	G 1/2"	–	
Air quality	Oil-clean and waterless filtered air, with max 25µm particle content	–	
Max water pressure	10 bar	–	
Water flow	20 l/min	–	
Water connection	G1/2"	–	
Water quality	Clean filtered with max 25µm particle content	–	
Electrical signals			
Number of signals	40	34	
Dedicated signals	1 x 24 V DC	–	
	1 x 0 V DC	–	
	1 TC Opened	–	
	1 TC Closed	–	
	2 TC-valves	–	
Max current	2 A	–	
Max voltage	60 V	–	
Number of servo power	3	–	
Dedicated signals	1 PE	–	
Max servo current	16 A	–	
Max servo voltage	700 VAC	–	
Connections	3 module Harting 10B		
Welding power			
Number of conductors	3	–	
Dedicated conductors	1 PE	–	
Max peak current	400 A	–	
Max continuous current	135 A	–	
Max voltage	690 V	–	
Connections	Cable gland (Dia19–28mm)		

Spot welding tool changers and tool attachments for pneumatic gun

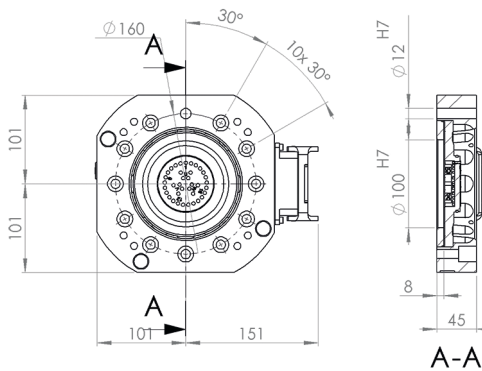
P0593
Tool changer TC500-SWP



P0595
Gun attachment TA500-SWP



P0597
Tool attachment TA500-SWP/
MH

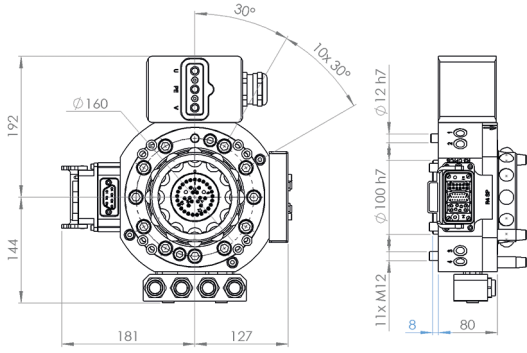


TC/TA500

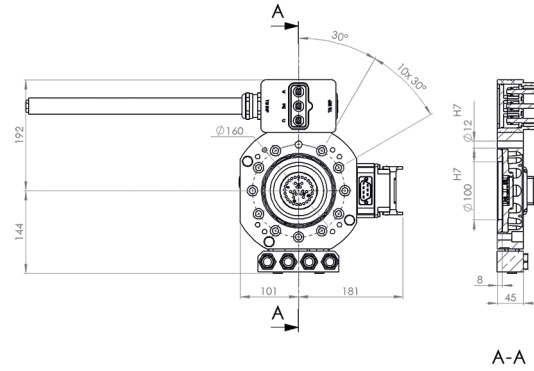
Type	TC500-SWP	TA500-SWP	TA500-SWP/MH
Article number	P0593	P0595	P0597
Weight (kg)	16.0	10.0	7.0
Mechanical interface	ISO 9409-1 160-11-M12		
Working temperature	+10°C – +60°C		
IP classification	IP 54		
Maximum tool load			
Fz (static)	± 5000 N		
Mz (dynamic)	± 3500 Nm		
Mx/My (dynamic)	± 5000 Nm		
Air ducts			
Number of air ducts	8		
Max air pressure	10 bar		
Air flow	1600 l/min		
Air connection	G 1/4"		
Pneumatic valve	Integrated TC-valves	–	
Air quality	Oil-clean and waterless filtered air, with max 25µm particle content		
Air/water ducts without automatic shut off function			
Number of ducts	4	–	
Dedicated air ducts	1 TC Open/Close (6–10 bar)		
Max air pressure	10 bar		
Air flow	2500 l/min		
Connection	G 1/2"		
Air quality	Oil-clean and waterless filtered air, with max 25µm particle content		
Max water pressure	10 bar	–	
Water flow	20 l/min	–	
Water connection	G 1/2"	–	
Water quality	Please check manual for detail		–
Electrical signals			
Number of signals	43	36	
Dedicated signals	1 x 24 V DC		
	1 x 0 V DC		
	1 PE		
	1 TC Coupled	–	
	1 TC Opened	–	
	2 TC-valves	–	
Max current	2 A		
Max voltage	60 V		
Connections	3 module Harting 10B		
Welding power			
Number of conductors	3	–	
Dedicated conductors	1 PE	–	
Max peak current	400 A	–	
Max continuous current	135 A	–	
Max voltage	690 V	–	
Connections	Cable gland (19–28mm)	1.3 m 3 x 25mm ² cable with open end	–

Spot welding tool changers and tool attachments for servo gun

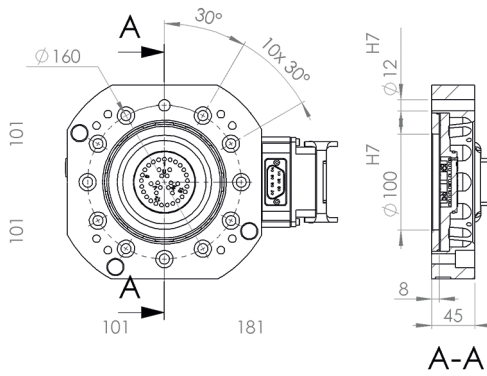
P0594
Tool changer TC500-SWS



P0596
Gun attachment TA500-SWS



P0598
Tool attachment TA500-SWS/
MH

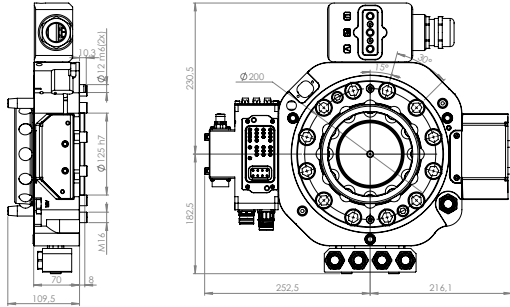


TC/TA500

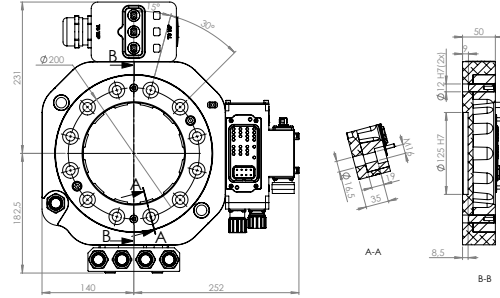
Type	TC500-SWS	TA500-SWS	TA500-SWS/MH
Article number	P0594	P0596	P0598
Weight (kg)	16.2	10.3	7.2
Mechanical interface	ISO 9409-1 160-11-M12		
Working temperature	+10°C – +60°C		
IP classification	IP 54		
Maximum tool load			
Fz (static)	± 5000 N		
Mz (dynamic)	± 3500 Nm		
Mx/My (dynamic)	± 5000 Nm		
Air ducts			
Number of air ducts	8		
Max air pressure	10 bar		
Air flow	1600 l/min		
Air connection	G 1/4"		
Pneumatic valve	Integrated TC-valves	–	
Air quality	Oil-clean and waterless filtered air, with max 25µm particle content		
Air/water ducts with automatic shut off function			
Number of ducts	4	–	
Dedicated air ducts	1 TC Open/Close (6-10 bar)	–	
Max air pressure	10 bar	–	
Air flow	2500 l/min	–	
Connection	G 1/2"	–	
Air quality	Oil-clean and waterless filtered air, with max 25µm particle content		
Max water pressure	10 bar	–	
Water flow	20 l/min	–	
Water connection	G 1/2"	–	
Water quality	Please check manual for detail		
Electrical signals			
Number of signals	43	36	
Dedicated signals	1 x 24 V DC		
	1 x 0 V DC		
	1 PE		
	1 TC Coupled	–	
	1 TC Opened	–	
Max current	2 A		
	60 V		
Max voltage	60 V		
Number of servo power	4		
Dedicated signals	1 PE		
Max servo current	15 A		
Max servo voltage	690 V		
Connections	3-module Harting 10B		
Welding power			
Number of conductors	3	–	
Dedicated conductors	1 PE	–	
Max peak current	400 A	–	
Max continuous current	135 A	–	
Max voltage	690 V	–	
Connections	Cable gland (19–28mm)	1.3 m 3 x 25mm ² cable with open end	

Spot welding tool changers and tool attachments for servo gun

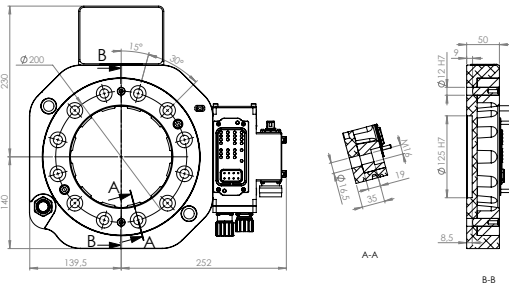
P6906
Tool changer TC720-SWS



P6908
Gun attachment TA720-SWS



P6909
Tool attachment TA720-SW/MH

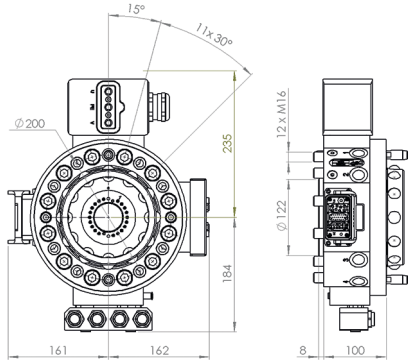
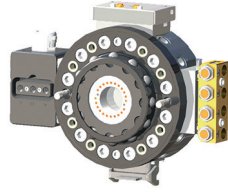


TC/TA720

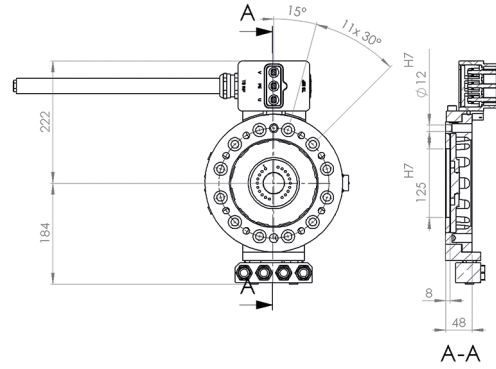
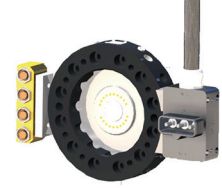
Type	TC720-SWS	TA720-SWS	TA720-SW/MH
Article number	P6906	P6908	P6909
Weight (kg)	24.4	16.3	12.9
Mechanical interface	ISO 9409-1 200-12-M16		
Working temperature	+10°C – +60°C		
IP classification	IP54		
Maximum tool load			
Fz (static)	±10000 N		
Mz (dynamic)	±10000 Nm		
Mx/My (dynamic)	±10000 Nm		
Air ducts			
Number of air ducts	1		
Max air pressure	10 bar		
Air flow	2000 l/min		
Air connection	G 1/2"		
Pneumatic valve	Integrated TC-valves	–	
Air quality	Oil-clean and waterless filtered air, with max 25µm particle content		
Air/water ducts with automatic shut off function			
Number of ducts	4	–	
Max air pressure	10 bar	–	
Air flow	2000 l/min	–	
Connection	G 1/2"	–	
Air quality	Oil-clean and waterless filtered air, with max 25µm particle content	–	
Max water pressure	10 bar	–	
Water flow	20 l/min	–	
Water connection	G 1/2"	–	
Water quality	Clean filtered with max 25µm particle content	–	
Electrical signals			
Number of signals	40	34	
Dedicated signals	1 x 24 V DC	–	
	1 x 0 V DC	–	
	1 TC Opened	–	
	1 TC Closed	–	
	2 TC-valves	–	
Max current	2 A	–	
Max voltage	60 V	–	
Number of servo power	3	–	
Dedicated signals	1 PE	–	
Max servo current	16 A	–	
Max servo voltage	700 V AC	–	
Connections	3-module Harting 10B		
Welding power			
Number of conductors	3	–	
Dedicated conductors	1 PE	–	
Max peak current	400 A	–	
Max continuous current	135 A	–	
Max voltage	690 V	–	
Connections	Cable gland (19–28mm)		

Spot welding tool changers and tool attachments for pneumatic gun

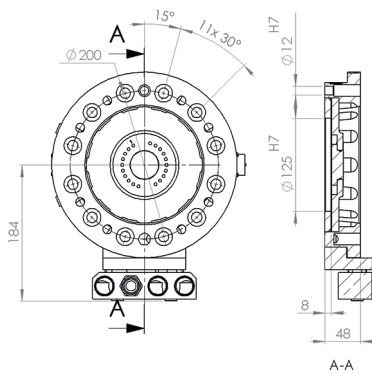
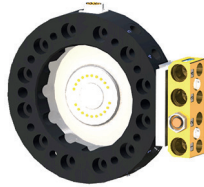
P0745
Tool changer TC1000-SWP



P0747
Gun attachment TA1000-SWP



P0749
Tool attachment TA1000-SWP/MH

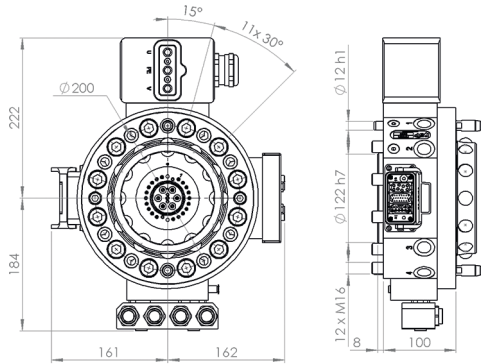


TC/TA1000

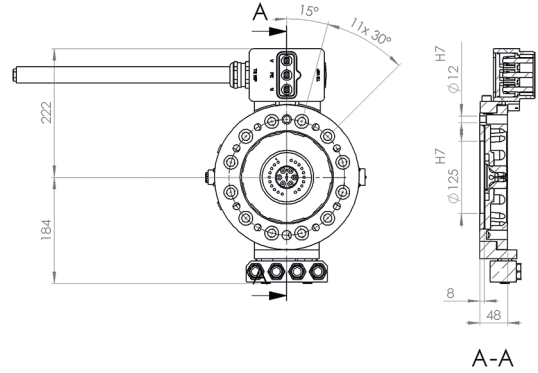
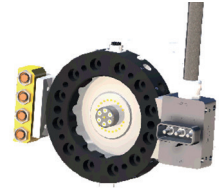
Type	TC1000-SWP	TA1000-SWP	TA1000-SWP/MH
Article number	P0745	P0747	P0749
Weight (kg)	24.6	12.3	10.3
Mechanical interface	ISO 9409-1 200-12-M16		
Working temperature	+10°C – +60°C		
IP classification	IP 54		
Maximum tool load			
Fz (static)	± 10000 N		
Mz (dynamic)	± 10000 Nm		
Mx/My (dynamic)	± 10000 Nm		
Air ducts			
Number of Air ducts	8		
Max Air pressure	10 bar		
Air flow	2700 l/min		
Air connection	G 1/2"		
Pneumatic valve	Integrated TC-valves	–	
Air quality	Oil-clean and waterless filtered air, with max 25µm particle content		
Air/water ducts with automatic shut off function			
Number of ducts	4	1	
Dedicated Air ducts	1 (6–10 bar for tool change)		
Max Air pressure	10 bar		
Air flow	2400 l/min		
Connection	G 1/2"		
Air quality	Oil-clean and waterless filtered air, with max 25µm particle content		
Max water pressure	10 bar		
Water flow	20 l/min		
Water connection	G 1/2"		
Water quality	Please check manual for detail		
Electrical signals			
Number of signals	23	19	
Dedicated signals	1 x 24 V DC		
	1 x 0 V DC		
	1 TC Coupled	–	
	1 TC Opened	–	
	2 TC Valves	–	
Max current	2 A		
Max voltage	60 V		
Connections	3-module Harting 10B	23S Souriau	
Welding power			
Number of conductors	3	–	
Dedicated conductors	1 PE	–	
Max peak current	400 A	–	
Max continuous current	135 A	–	
Max voltage	690 V	–	
Connections	Cable gland (19–28mm)	1.3 m 3 x 25mm ² cable with open end	–

Spot welding tool changers and tool attachments for servo gun

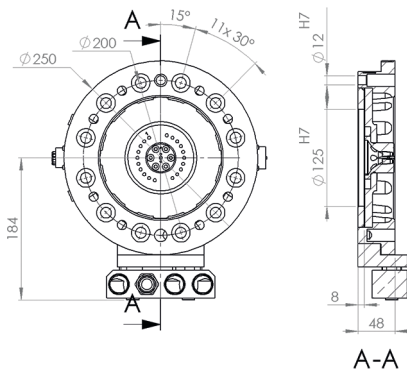
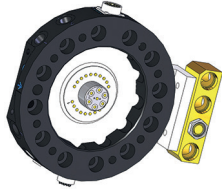
P0746
Tool changer TC1000-SWS



P0748
Gun attachment TA1000-SWS



P0750
Tool attachment TA1000-SWS/MH



TC/TA1000

Type	TC1000-SWS	TA1000-SWS	TA1000-SWS/MH
Article number	P0746	P0748	P0750
Weight (kg)	24.8	12.4	10.4
Mechanical interface	ISO 9409-1 200-12-M16		
Working temperature	+10°C – +60°C		
IP classification	IP 54		
Maximum tool load			
Fz (static)	± 10000 N		
Mz (dynamic)	± 10000 Nm		
Mx/My (dynamic)	± 10000 Nm		
Air ducts			
Number of Air ducts	8		
Max Air pressure	10 bar		
Air flow	2700 l/min		
Air connection	G 1/2"		
Pneumatic valve	Integrated TC-Valves	–	
Air quality	Oil-clean and waterless filtered air, with max 25µm particle content		
Air/water ducts with automatic shut off function			
Number of ducts	4	1	
Dedicated Air ducts	1 TC Open/Close (6–10 bar)		
Max Air pressure	10 bar		
Air flow	2400 l/min		
Connection	G 1/2"		
Air quality	Oil-clean and waterless filtered air, with max 25µm particle content		
Max water pressure	10 bar		
Water flow	20 l/min		
Water connection	G 1/2"		
Water quality	Please check manual for detail		
Electrical signals			
Number of signals	26	22	
Dedicated signals	1 x 24 V DC		
	1 x 0 V DC		
	1 TC Coupled	–	
	1 TC Opened	–	
	2 TC Valves	–	
Max current	2 A		
Max voltage	60 V		
Number of servo power	3	4	
Dedicated signals	–	1 PE	
Max servo current	15 A		
Max servo voltage	690 V		
Connections	3-module Harting 10B	1 x 19S Souriau, 1 x 23S Souriau	
Welding power			
Number of conductors	3	–	
Dedicated conductors	1 PE	–	
Max peak current	400 A	–	
Max continuous current	135 A	–	
Max voltage	690 V	–	
Connections	Cable gland (19–28mm)	1.3 m 3 x 25mm ² cable with open end	–

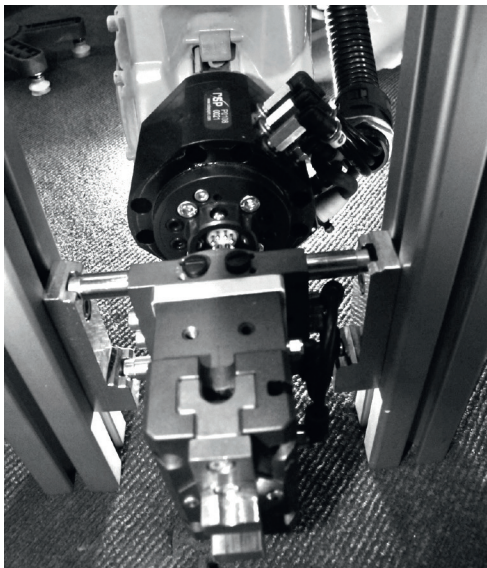


Swivels with tool changer and attachments

Swivels with tool changer

Robot System Products swivels with tool changers unite the best out of two technologies. With the TrueConnect™ tool changing mechanism integrated with our swivel technology, absolute positioning repeatability and large tolerances at docking is combined with full motional freedom of your robots – axis 6 is allowed to rotate freely without being limited by hoses, cables or other obstacles. Low weight, high corrosion resistance and a minimum of service requirements will maximize uptime and consequently enhance your productivity in all applications involving substantial robot motions.

- Fast docking with high tolerance
- Absolute positioning repeatability
- Free rotation axis 6
- No limits to axis 4 and 5 when used with RSP hose packages
- Low weight and high corrosion resistance
- Low maintenance and high uptime



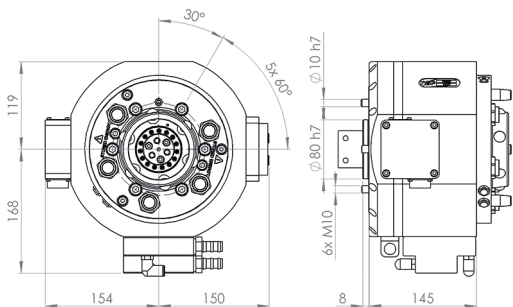
Note!

RSP's design of swivel units is based on the ISO standard for robot flanges. For the swivel unit to be able to function properly an adaptation kit has to be included. RSP provides a wide range of adaptation kits for different robot brands. If you do not find your robot model please contact RSP support.

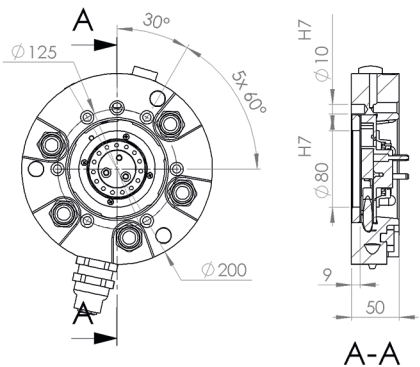
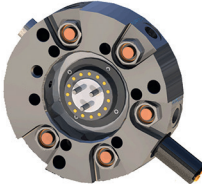


Spot welding swivels with tool changer and tool attachments for pneumatic gun

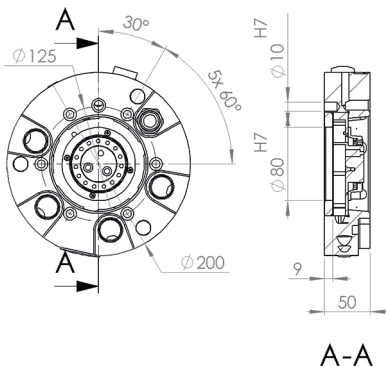
P6402
Swivel with tool changer
STC250-SWP



P6404
Gun attachment TA250-SWP



P6405
Tool attachment TA250-SWP/
MH

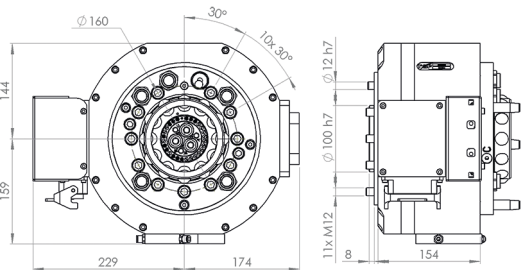


STC/TA250

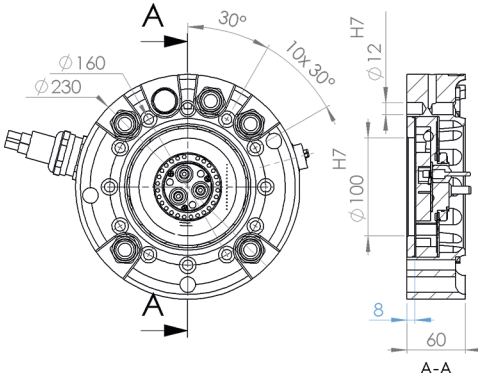
Type	STC250-SWP	TA250-SWP	TA250-SWP/MH
Article number	P6402	P6404	P6405
Weight (kg)	24.8	7.4	6.7
Mechanical interface	ISO 9409-1 125-6-M10		
Working temperature	+10°C – +60°C		
IP classification	IP 54		
Maximum tool load			
Fz (static)	± 2500 N		
Mz (dynamic)	± 1790 Nm		
Mx/My (dynamic)	± 1790 Nm		
Air ducts			
Number of air ducts	2	1	
Dedicated air ducts	1 (6–10 bar for tool change)		
Air pressure proc 1	6–10 bar		
Air pressure proc 5	Max. 10 bar		
Air flow proc 1	2000 l/min, free at Pin = 1 MPa		
Air flow proc 5	2000 l/min, free at Pin = 1 MPa		
Air connection	G1/2"		
Pneumatic valve	Integrated TC-Valves	–	
Air quality	Oil-clean and waterless filtered air, with max 25µm particle content		
Water ducts			
Number of water ducts	3	–	
Max water pressure	10 bar	–	
Water flow	16 l/min	–	
Water connection	G 1/2"	–	
Water quality	Please check manual for detail		–
Electrical signals			
Number of signals	18	15	
Dedicated signals	1 x 24 V DC		
	1 x 0 V DC		
	1 TC Coupled		
	1 TC Opened	–	
	2 TC Valves	–	
Max current	2 A		
Max voltage	60 V		
Connections	23P Souriau	19S Souriau	
Welding power			
Number of conductors	3	–	
Dedicated conductors	1 PE	–	
Max peak current	350 A	–	
Max continuous current	45 A	–	
Max voltage	690 V	–	
Connections	RSP Interface. Type: Multi-Contact TSS/25	1 m cable with open end 3 x 25mm ²	

Spot welding swivels with tool changer and tool attachment

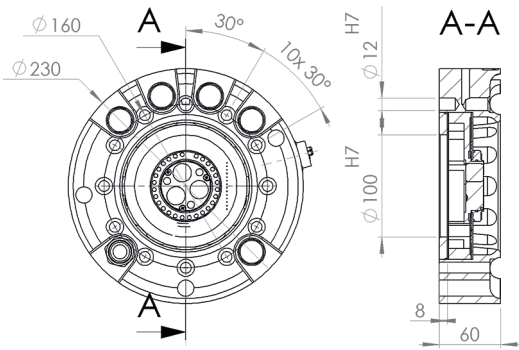
P6620A
Swivel with tool changer
STC350-SWP



P6622A
Gun attachment
TA350-SWP



P6624A
Tool attachment
TA350-SW/MH

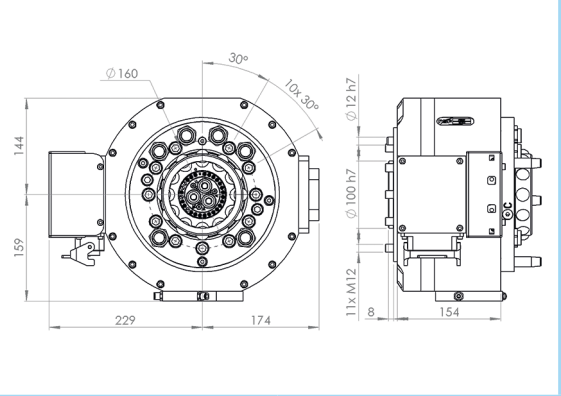
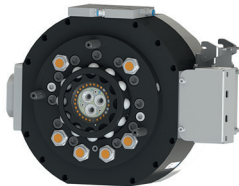


STC/TA350

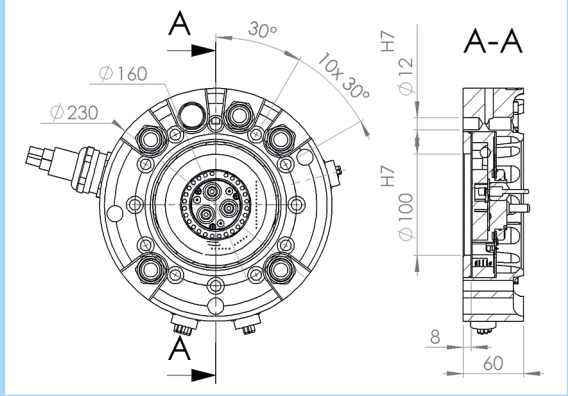
Type	STC350-SWP	TA350-SWP	TA350-SW/MH
Article number	P6620A	P6622A	P6624A
Weight (kg)	25.4	7.5	7.3
Mechanical interface	ISO 9409-1 160-11-M12		
Working temperature	+10°C – +60°C		
IP classification	IP 54		
Maximum tool load			
Fz (static)	± 3500 N		
Mz (dynamic)	± 2300 Nm		
Mx/My (dynamic)	± 2300 Nm		
Air ducts			
Number of air ducts	2		1
Dedicated air ducts	1 (6–10 bar for tool change)		
Air pressure proc 1	6–10 bar		
Air pressure proc 5	Max. 10 bar		
Air flow proc 1	2000 l/min, free at Pin = 1.0 MPa	2500 l/min	
Air flow proc 5	2000 l/min, free at Pin = 1.0 MPa	2500 l/min	
Air connection	G 1/2"		
Pneumatic valve	Integrated TC-valves	–	
Air quality	Oil-clean and waterless filtered air, with max 25µm particle content		
Water ducts			
Number of water ducts	3		–
Max water pressure	10 bar		–
Water flow	16 l/min	20 l/min	–
Water Connection	G 1/2"		–
Water quality	Please check manual for detail		–
Electrical signals			
Number of signals	16	11	11
Dedicated signals	1 x 24 V DC	1 x 24 V DC	
	1 x 0 V DC	1 PE	
	1 TC Coupled	–	
	1 TC Opened	–	
	2 TC Valves	–	
Max current	2 A		
Max voltage	60 V		
Number of servo power	–		
Max servo current	–		
Max servo voltage	–		
Connections	3-module Harting 10B	19S Souriau	
Welding power			
Number of conductors	3		–
Dedicated conductors	1 PE		–
Max peak current	400 A		–
Max continuous current	135 A		–
Max voltage	690 V		–
Connections	MC TSS150	1 m 3 x 25mm ² cable, open end	

Spot welding swivels with tool changer and tool attachment

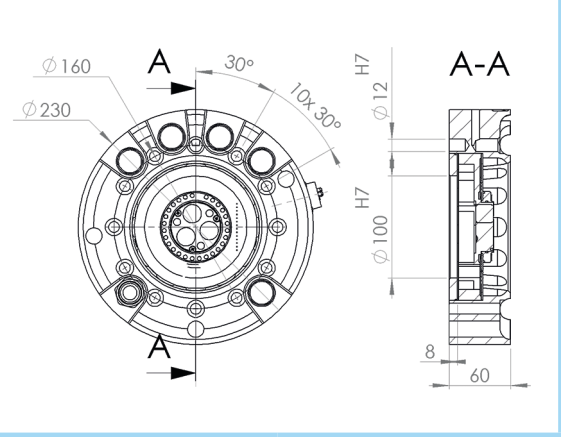
P6621A
Swivel with tool changer
STC350-SWS



P6623A
Tool attachment TA350-SWS



P6624A
Tool attachment TA350-SW/
MH



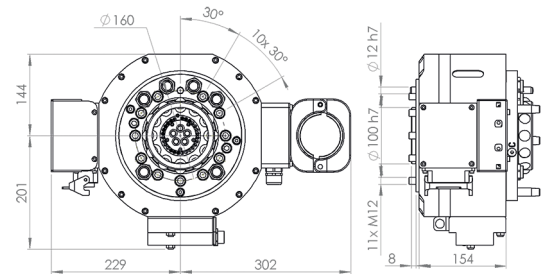
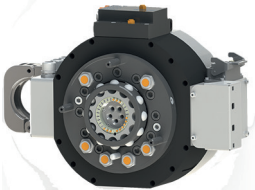
Swivel with tool changer

STC/TA350

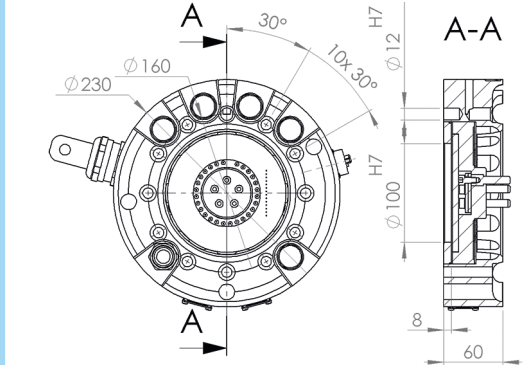
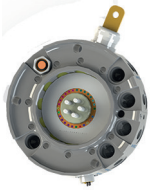
Type	STC350-SWS	TA350-SWS	TA350-SW/MH
Article number	P6621A	P6623A	P6624A
Weight (kg)	30.0	8.1	7.3
Mechanical interface	SO 9409-1 160-11-M12		
Working temperature	+10°C – +60°C		
IP classification	IP 54		
Maximum tool load			
Fz (static)	± 3500 N		
Mz (dynamic)	± 2300 Nm		
Mx/My (dynamic)	± 2300 Nm		
Air ducts			
Number of air ducts	2		1
Dedicated air ducts	1 (6–10 bar for tool change)		
Air pressure proc 1	6–10 bar		
Air pressure proc 5	Max. 10 bar		
Air flow proc 1	2000 l/min, free at Pin = 1.0 MPa	2500 l/min	
Air flow proc 5	2000 l/min, free at Pin = 1.0 MPa	2500 l/min	
Air connection	G 1/2"		
Pneumatic valve	Integrated TC-valves	–	
Air quality	Oil-clean and waterless filtered air, with max 25µm particle content		
Water ducts			
Number of water ducts	3		–
Max water pressure	10 bar		–
Water flow	16 l/min	20 l/min	–
Water Connection	G 1/2"		
Water quality	Please check manual for detail		–
Electrical signals			
Number of signals	27	22	11
Dedicated signals	1 x 24 V DC	1 x 24 V DC	
	1 x 0 V DC	1 PE	
	1 TC Coupled	–	
	1 TC Opened	–	
	2 TC Valves	–	
Max current	2 A		
Max voltage	60 V		
Number of servo power	3		–
Max servo current	15 A		–
Max servo voltage	690 V		–
Connections	3-module Harting 10B	3 x 19S Souriau	19S Souriau
Welding power			
Number of conductors	3		–
Dedicated conductors	1 PE		–
Max peak current	400 A		–
Max continuous current	135 A		–
Max voltage	690 V		–
Connections	MC TSS150	1 m 3 x 25mm ² cable, open end	

Arc welding grounding swivels with tool changer and tool attachment

P6656A
Swivel with tool changer
STC350-AWG

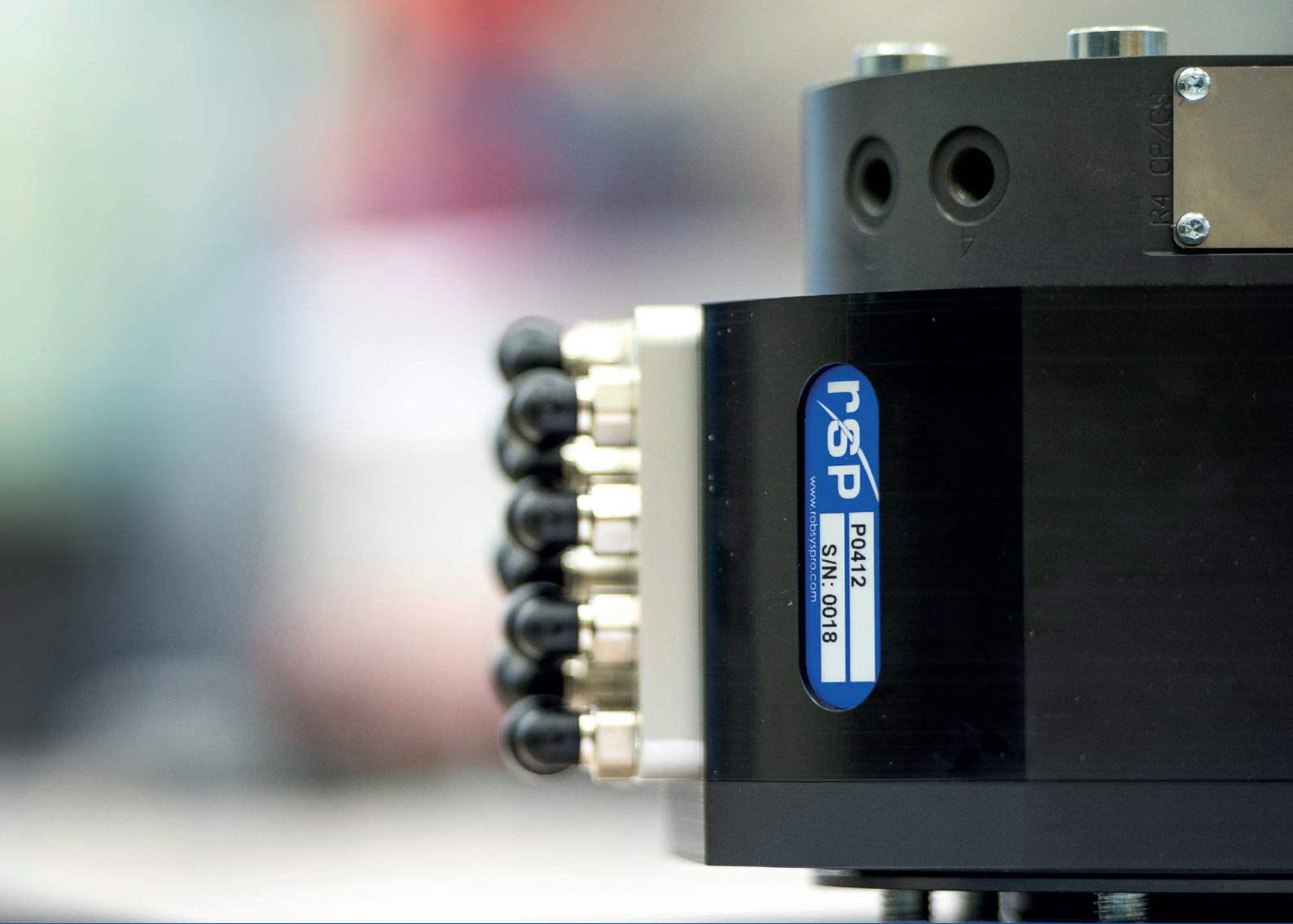


P6657A
Gun attachment
TA350-AWG



STC/TA350

Type	STC350-AWG	TA350-AWG
Article number	P6656A	P6657A
Weight (kg)	33.2	8.0
Mechanical interface	ISO 9409-1 160-11-M12	
Working temperature	+10°C – +60°C	
IP classification	IP 54	
Maximum tool load		
Fz (static)	± 3500 N	
Mz (dynamic)	± 2300 Nm	
Mx/My (dynamic)	± 2300 Nm	
Air ducts		
Number of air ducts	1	
Dedicated air ducts	1 (6–10 bar for tool change)	
Max air pressure	10 bar	
Air flow	2000 l/min	
Air connection	G 1/2"	
Pneumatic valve	Integrated TC-valves	–
Air quality	Oil-clean and waterless filtered air, with max 25µm particle content	
Electrical signals		
Number of signals	27	22
Dedicated signals	1 x 24 V DC	1 x 24 V DC
	1 x 0 V DC	1 PE
	1 TC Coupled	–
	1 TC Opened	–
	2 TC Valves	–
Max current	2 A	
Max voltage	60 V	
Connections	3-module Harting 10B	2 x 19S Souriau
Welding power		
Number of conductors	1 (3 screw connections)	1
Dedicated conductors	1 PE	
Max peak current	400 A	
Max continuous current	135 A	
Max voltage	690 V	
Connections	3 x Cable gland (11–17mm)	Copper plate with Ø10.5 hole



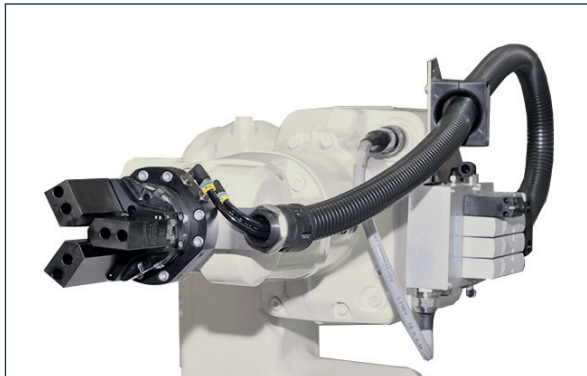
Swivels

Swivels

With Robot System Products swivels you can provide compressed air, water, electrical and data signals, as well as weld and servo power to your tools with robot motion capabilities fully maintained. Axis 6 is allowed to rotate freely without limitations by hoses, cables or other obstacles and together with our hose packages there are no limits to axis 4 and 5 as well.

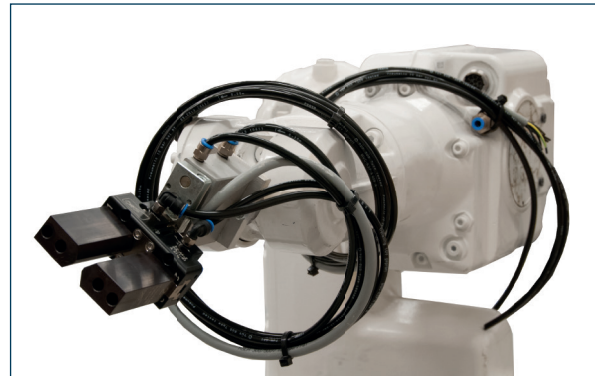
With RSP swivels, the low weight, high corrosion resistance and a minimum of service requirements will enhance your productivity and maximize uptime in all applications involving substantial robot motions.

- Free rotation axis 6
- No limits to axis 4 and 5 when used with RSP hose packages
- Air, water, electrical and fieldbus signals
- Weld and servo power
- Low weight and high corrosion resistance
- Low maintenance and high uptime



With swivel

The rotation of axis 6 does not affect the Dress Pack on the upper arm.



Without swivel

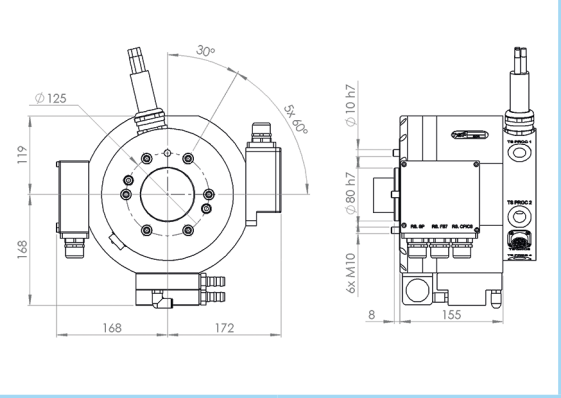
Hose and cable package will be twisted around the upper arm of the robot when axis 6 rotates.

Note!

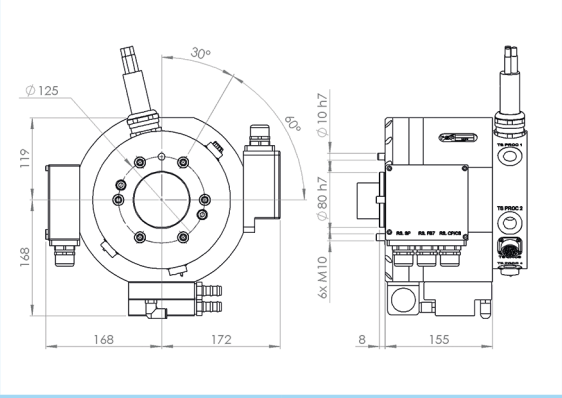
RSP's design of swivel units is based on the ISO standard for robot flanges. For the swivel unit to be able to function properly an adaptation kit has to be included. RSP provides a wide range of adaptation kits for different robot brands. If you do not find your robot model please contact RSP support.

Spot welding swivels

P6433
Swivel S250-SWP



P6434
Swivel S250-SWS

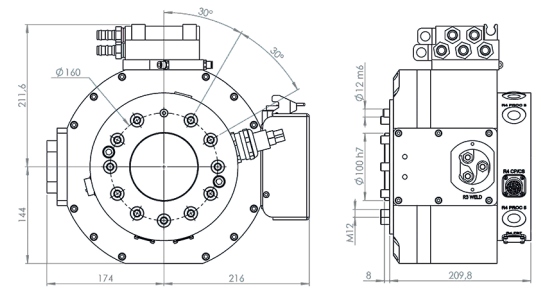
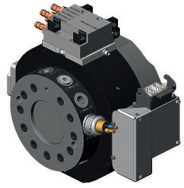


S250

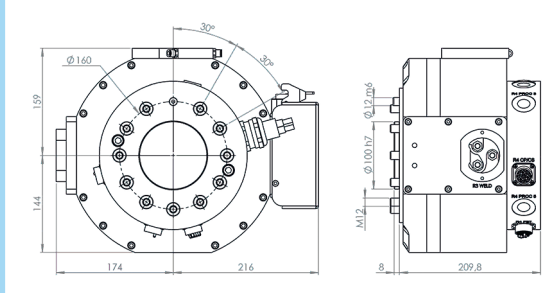
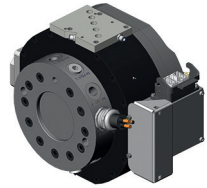
Type	S250-SWP	S250-SWS
Article number	P6433	P6434
Weight (kg)	18.8	18.9
Mechanical interface	ISO 9409-1 125-6-M10	
Working temperature	+10°C – +60°C	
IP classification	IP 54	
Maximum tool load		
Fz (static)	± 2500 N	
Mz (dynamic)	± 2500 Nm	
Mx/My (dynamic)	± 2500 Nm	
Air/water ducts		
Number of air/water ducts	5	
Max air/water pressure	10 bar	
Air flow	2000 l/min	
Water flow	14 l/min	
Connection, robot side	G 1/2"	
Connection, tool side	G 1/2"	
Air quality	Oil-clean and waterless filtered air, with max 25µm particle content	
Pneumatic valve	–	
Water quality	Please check manual for detail	
Electrical signals		
Number of slip ring signals	18	36
Dedicated signals	1 PE	
Max current	2 A	
Max voltage	60 V	
Connection, robot side	3 x Cable gland (11–17mm)	
Connection, tool side	19S Souriau	2 x 19S Souriau
Number of servo signals	–	3
Max ervo current	–	15 A
Max servo voltage	–	690 V
Connection, robot side	–	Cable gland (11–17mm)
Connection, tool side	–	19S Souriau
Welding power		
Number of conductors	3	
Dedicated conductors	1 PE	
Max peak current	350 A	
Max continuous current	95 A	
Max voltage	690 V	
Connection, robot side	3 x Cable gland (11–17mm)	
Connection, tool side	1m 25mm ² cable (open end)	

Spot welding swivels

P6644
Swivel S350-SWP

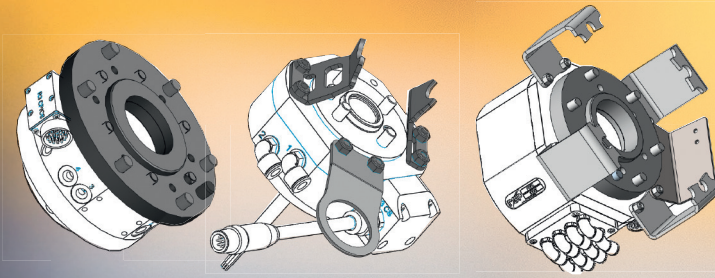


P6645
Swivel S350-SWS



S350

Type	S350-SWP	S350-SWS
Article number	P6644	P6645
Weight (kg)	27.2	25.8
Mechanical interface	ISO 9409-1 160-11-M12	
Working temperature	+10°C – +60°C	
IP classification	IP 54	
Maximum tool load		
Fz (static)	± 3500 N	
Mz (dynamic)	± 3500 Nm	
Mx/My (dynamic)	± 3500 Nm	
Air/Water ducts		
Number of air/water ducts	5	
Max air/water pressure	10 bar	
Air flow	2000 l/min	
Water flow	14 l/min	
Connection, robot side	G 1/2"	
Connection, tool side	G 1/2"	
Pneumatic valve	–	
Air quality	Oil-clean and waterless filtered air, with max 25µm particle content	
Water quality	Please check manual for detail	
Electrical signals		
Number of slip ring signals	16	27
Max current	2 A	
Max voltage	60 V	
Connection, robot side	3-module Harting 10B	(3 module Harting 10B see below)
Connection, tool side	19S Souriau	2 x 19S Souriau
Number of servo signals	–	3
Max servo current	–	15 A
Max servo voltage	–	690 V
Connection, robot side	–	3-module Harting 10B
Connection, tool side	–	19S Souriau
Welding power		
Number of conductors	3	
Dedicated conductors	1 PE	
Max peak current	400 A	
Max continuous current	135 A	
Max voltage	690 V	
Connection, robot side	MC TSS150	
Connection, tool side	1.3m 25mm ² cable (open end)	



Adaptations

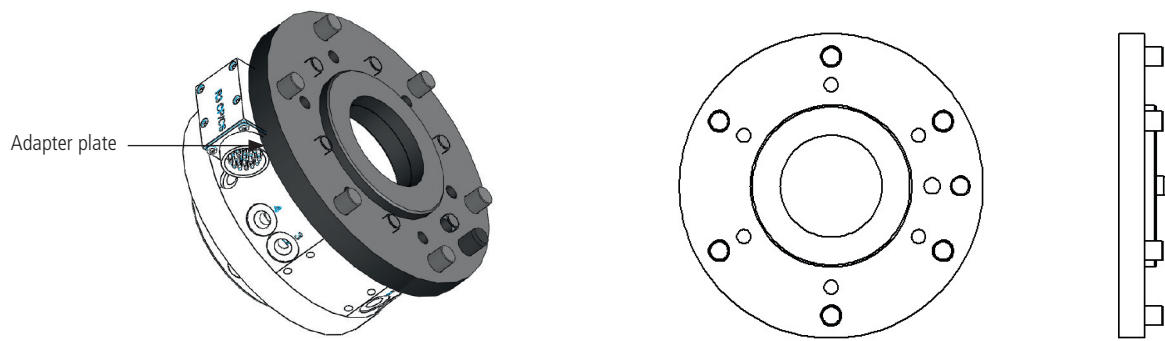
Adaptation kits

Robot System Products tool changers, swivels and swivels with integrated tool changers are based on the ISO standard for robot flange bolt patterns. For other bolt circles, adaptation plates are available from RSP. For swivel units and swivels with integrated tool changer, specific adaptation kits have to be used to ensure rotation functionality.

NOTE!

There is always a risk when a large robot is equipped with a small tool changer due to the fact that the larger robot uses higher forces in acceleration, deceleration and most importantly when the robot perform an emergency stop. The maximum dynamic forces are rated for each product and you can always consult a RSP representative or our website if you have any questions on how to select the right product for your robot.

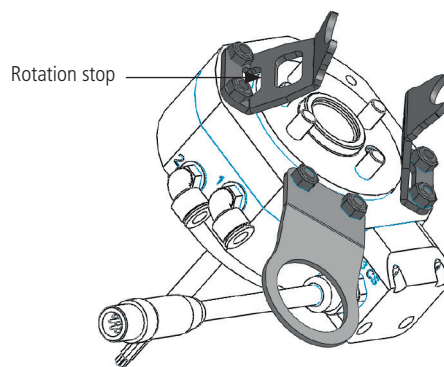
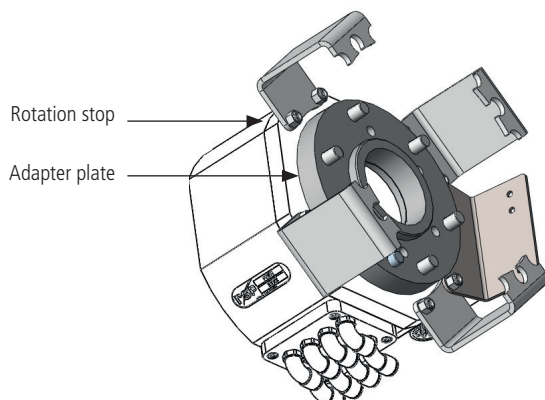
Adaptation kits for tool changers



All screws are included.

Tool changer	Article number	Robot model	Mechanical interface robot flange	Weight (Kg)	Adapter plate thickness (mm)
TC240, TC250, TC275	–	Fits directly to robot with ISO-flange	ISO 9409-1 125-6-M10	–	–
	P6428	ABB IRB 6600/2.55-175	ISO 9409-1 160-11-M12	3.30	16
		ABB IRB 6640/2.55-180			
		ABB IRB 6600/others			
		ABB IRB 6640/others			
	P6468	KUKA KR210 R3100 Ultra	ISO 9409-1 160-11-M10	2.9	16
P6478	Fanuc M-900iA/260, /350	ISO 9409-1 200-6-M12	8.8	41	
TC350, TC480, TC500	–	Fits directly to robot with ISO-Flange	ISO 9409-1 160-11-M12	–	–
	P0657	ABB IRB 7600	ISO 9409-1 200-12-M16	6.43	25
	P0664	KUKA KR360-2, KR360 450-2PA	ISO 9409-1 200-6-M12	5.5	25
		KUKA KR500-2, KR500-2CR, KR500-3			
		KR500 570-2PA			
		Kawasaki MX350L			
		Kawasaki MX420L			
	P0670	FANUC R2000iB 175L/210F	ISO 9409-1 125-10-M10	2.16	15
	P1610	Fanuc M900iA /260, /350	ISO 9409-1 200-6-M12	5.1	25
	P6430	Motoman ES165N, ES165N-100, ES200N	125-6-M10	2.7	16
P6860	Comau Smart 5 NJ 270-2.7	ISO 9409-1 200-6-M12	5.2	20	
	Comau Smart 5 NJ 500-2.7				
TC1000	P0759	Fanuc M-900iA/700	250-10-M12	8.7	28

Adaptation kits for swivels and swivels with tool changer



All screws are included.

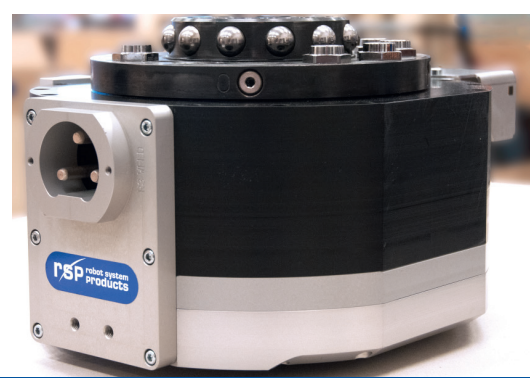
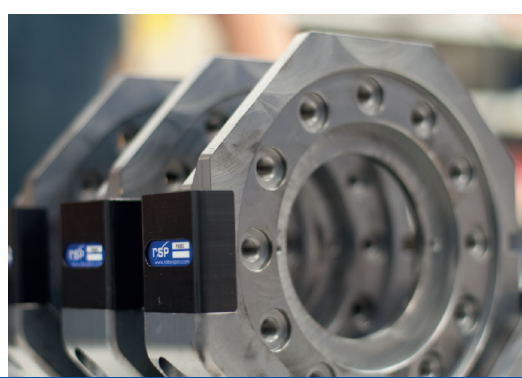
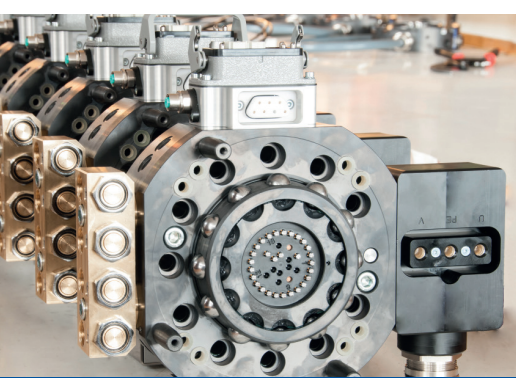
Swivel	Article number	Robot model	Mechanical interface robot flange	Weight (Kg)	Adapter plate thickness (mm)
S250, STC250	P0683	Fanuc R2000iB 175L/210F	125-10-M10	0.38	–
	P2304	KUKA KR240-2	ISO 9409-1 160-6-M10	11.2	41
	P6419	ABB IRB6400	ISO 9409-1 125-6-M10	0.70	–
	P6424	ABB IRB6600/2.55-175	ISO 9409-1 160-11-M12	4.12	16
		ABB IRB6640/2.55-180			
	P6425	ABB IRB6600/others	ISO 9409-1 160-11-M12	4.25	16
		ABB IRB6640/other			
		ABB IRB6650S 125			
	P6490	ABB IRB6700 Higher line	ISO 9409-1 160-11-M12	4.05	16
	P6427	ABB IRB6620	ISO 9409-1 160-11-M12	4.05	16
	P6445	Kawasaki ZX165U	ISO 9409-1 125-6-M10	0.38	–
	P6446	Hyundai HX165S	125-6-M10	0.39	–
	P6447	Nachi SH133/166	125-6-M10	0.40	–
	P6448	Motoman ES165N, ES165D	125-6-M10	0.26	–
	P6467	KUKA KR210 R3100 Ultra	160-11-M10	3.7	16
	P6475	KUKA KR150-2, KR210-2, KR210-K (serie 2000)	ISO 9409-1 160-6-M10	3.7	16
P1621	KUKA KR210 R2700 Extra	ISO 9409-1 160-6-M10	3.7	16	
P6477	Fanuc R-2000/iB 165F/165R/125L/100H	ISO 9409-1 125-6-M10	0.17	–	
P6480	Motoman ES200D	125-6-M10	0.2	–	
S350, STC350	P0620	ABB IRB6600/2.55-175	ISO 9409-1 160-11-M12	1.2	–
		ABB IRB6640/2.55-180			
	P0621	ABB IRB6600/others	ISO 9409-1 160-11-M12	1.1	–
		ABB IRB6400/others			
		ABB IRB6650S 125			
	P1614	ABB IRB6700 Power line	ISO 9409-1 200-12-M16	1.04	25
	P1615	ABB IRB6700 Higher line	ISO 9409-1 160-11-M12	0.74	–
	P0622	ABB IRB7600	ISO 9409-1 200-12-M16	1.04	25
	P0656	ABB IRB6620 with optional side seal	ISO 9409-1 160-11-M12	0.74	–
P0671	Fanuc R2000iB 175L/210F	125-10-M10	2.4	15	
P1607	ABB IRB6400	ISO 9409-1 125-6-M10	3.75	15	
S350, STC350 Sealed version	P0693	KUKA KR240-2	ISO 9409-1 160-6-M10	0.4	–
	P0696	ABB IRB6600/2.55-175	ISO 9409-1 160-11-M12	1.96	–
		ABB IRB6640/2.55-180			
	P0697	ABB IRB6600/others	ISO 9409-1 160-11-M12	0.26	–
		ABB IRB6400/others			
P1612	ABB IRB6400	ISO 9409-1 125-6-M10	3.3	15	

Options for tool changers, swivels with tool changer and swivels

Options	Article number	Description
Options to TC240	P6712	Signal interface 3-module Harting (included in TC240-SWP)
	P6713	Signal and servo interface 3-module Harting (included in TC240-SWS)
	P6714	2 water/air couplings
	P6715	4 water/air couplings (included in TC240-SWx)
	P6716	Power, cable gland (included in TC240-SWx)
	P6717	Power, MC-connector
	P6718	Integrated valve (included in TC240-1EV and 240-SWx)
	P6719	Magnetic sensors open and close (included in TC240-1EV and TC240-SWx)
Options to TA240	P6722	Signal interface 3-module Harting (included in TA240-SWP and TA240-SW/MH))
	P6723	Signal and servo interface 3-module Harting (included in TA240-SWS)
	P6724	2 water/air couplings
	P6725	4 water/air couplings (included in TA240-SWx)
	P6726	Power, cable gland (included in TA240-SWx)
Options to TC275	P6512	Signal interface 3-module Harting (included in TC275-SWP)
	P6513	Signal and servo interface 3-module Harting (included in TC275-SWS)
	P6518	Power, cable gland (included in TC275-SWx)
	P6519	Power, MC-connector
	P0512	Integrated valve (included in TC275-SWx)
	P6715	4 water/air couplings (included in TC275-SWx)
	P6740	1 air coupling
Options to TA275	P6516	1 m power cable and signal interface 3-module Harting (included in TA275-SWP)
	P6517	1 m power cable, signals and servo interface 3-module Harting (included in TA275-SWS)
	P6536	Signal interface 3-module Harting (included in TA275-SWP/MH)
	P6537	Signal interface 3-module Harting and servo dummy (included in TA275-SWS/MH)
	P6725	4 water/air couplings (included in TA275-SWx)
	P6741	1 air coupling (included in TA275-SWx/MH)
Options to TC480	P6712	Signal interface 3-module Harting (included in TC480-SWP)
	P6713	Signal and servo interface 3-module Harting (included in TC480-SWS)
	P6714	2 water/air couplings
	P6715	4 water/air couplings (included in TC480-SWx)
	P6716	Power, cable gland (included in TC480-SWx)
	P6717	Power, MC-connector
	P6718	Integrated valve (included in TC480-1EV and TC480-SWx)
	P6719	Magnetic sensors open and close (included in TC480-1EV and TC480-SWx)
Options to TA480	P6722	Signal interface 3-module Harting (included in TA480-SWP and TA480-SW/MH)
	P6723	Signal and servo interface 3-module Harting (included in TA480-SWS)
	P6724	2 water/air couplings
	P6725	4 water/air couplings (included in TA480-SWx)
	P6726	Power, cable gland (included in TA480-SWx)

Options for tool changers, swivels with tool changer and swivels

Options	Article number	Description
Options to TC500	P0507	Signal interface 3-module Harting (included in TC500-SWP)
	P0537	Signals and servo interface 3-module Harting (included in TC500-SWS)
	P6716	Power, cable gland (included in TC500-SWx)
	P6717	Power, MC-connector
	P0512	Integrated valve (included in TC500-SWx)
	P6715	4 water/air couplings (included in TC500-SWx)
	P6740	1 air coupling
Options to TA500	P0510	Signal interface 3-module Harting (included in TA500-SWP and TA500-SWP/MH)
	P0538	Signals and servo interface 3-module Harting (included in TA500-SWS)
	P0573	Signal interface 3-module Harting and servo dummy (included in TA500-SWS/MH)
	P0712A	Power, 1 m cable
	P6726	Power, cable gland (included in TA500-SWx)
	P6725	4 water/air couplings (included in TA500-SWx)
	P6741	1 air coupling (included in TA500-SWx/MH)
Options to TC1000	P0706	Signals and servo interface 3-module Harting (included in TC1000-SWS)
	P0737A	Power, cable gland (included in TC1000-SWx)
	P0744	Power, MC-connector
	P0705	Integrated valve (included in TC1000-SWx)
	P0713A	4 water/air couplings (included in TC1000-SWx)
	P0741A	1 air coupling
	Options to TA1000	P0709
P0738A		1 m power cable (included in TA1000-SWx)
P0714A		4 water/air couplings (included in TA1000-SWx)
P0742A		1 air coupling (included in TA1000-SWx/MH)



How to order from RSP

Ordering from RSP is easy!

There are a few steps you should consider before placing an order:

- The size of the payload and robot when selecting the product
- The robot model name and arm length, model year if available.

Send your order by email to order@rsp.eu.com with the following information:

- 1.** Part number, description, price and amount
- 2.** PO number, date, required delivery date and delivery address
- 3.** If available, also state the quotation number

If you are a new customer, we also need below information:

- 1.** Contact person, phone number and email address
- 2.** Company name, address, phone/fax number and email address
- 3.** Organization and tax number (VAT inside Europe)



Dressing robots worldwide

RSP is based in Västerås Sweden and has offices and agents in over 20 countries worldwide.

Argentina – Chile – Peru – Uruguay

IRB Solutions S.A.
Buenos Aires
Phone: +54 3488 472 422
Email: cmpomilio@irbsolutions.com

Australia – New Zealand

RobotSpares
Frankston, VIC
Phone: +61 (0)414 843 191
Email: sales@robotspares.com.au

Belgium

AXYSTO
Geraardsbergen
Phone: +32 686 484 00
Email: info@axysto.com

Brasil

SINOVA
São Paulo
Phone: +55 11 5677-3919
Email: m.salzmann@sinova.com.br

China

Robot System Products Co., Ltd
Shanghai
Phone: +86 21 5190 5290
Email: info@robsyspro.com.cn

Denmark

Hoff Vakuumteknik
Charlottenlund
Phone: +45 251 700 85
Email: ndh@hoff-vakuum.dk

Finland

Oy Interfii Ltd
Kaarina
Phone: +358 201474500
Email: info@interfii.com

France

Sorelia
Poissy
Phone: +33 139 117272
Email: c.richard@sorelia-sa.com

Germany

Robot System Products GmbH
Günzburg
Phone: +49 8221 257959-0
Email: info@rsp.de.com

India

Kay Vybin Corporation
Mira
Phone: +91 22 2896 4671/2897 4972
Email: swati.mane@kayvybin.com

Ireland

Robotic & Drives Services Ltd.
Mullingar
Phone: +353 (0)87 050 7945
Email: stephen@rdservice.ie

Italy

Arcotech S.r.l.
Monza
Phone: +39 0392 028 977
Email: f.intini@arcotech.it

Korea

S.V Tech
Daegu
Phone: +82 53 267 1992
Email: svtech7@naver.com

Netherlands

Romicon
Wapenveld
Phone: +31 38 447 9181
Email: info@romicon.nl

Slovenia – Croatia – Serbia – Monte Negro – Bosnia – Herzegovina – Macedonia

OSSAT d.o.o.
Kranj
Phone: +386 31 267 537
Email: ossat.doo@gmail.com

Spain – Portugal

Eurotech System, S.L.
Santa Coloma de Cervelló
Phone: +34 649 983 301
Email: t.vidal@eurotechsys.com

Sweden

Robot System Products AB
Västerås
Phone: +46 21 816 600
Email: contact@rsp.eu.com

Thailand

I Robot
Bangkok
Phone: +66 2732 0082
Email: nikaziz@irobot.co.th

Turkey

iROB İleri Robot Otomasyon
ve Bilgi Teknolojileri
Bursa
Phone: +90 224 443 6343
Email: yalcin.eroglu@irob.com.tr

United Kingdom

Billington Group
Rotherham
Phone: +44 1709 543837
Email: warren@billington-group.co.uk

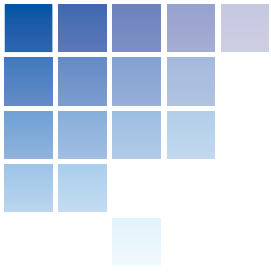
USA – Canada

Essential Robot Products, Inc.
Granger, IN
Phone: +1 574 271 7895
Email: josh.haag@robot-pros.com

The information in this document is subject to change without prior notice and should not be regarded as an undertaking from Robot System Products AB. Robot System Products AB assumes no responsibility for errors that may occur in this document.

Robot System Products AB bears no responsibility for damage that is incurred by the use of this document, or the software or hardware described in this document.

The document, or parts of it, may not be reproduced or copied without prior permission from Robot System Products AB. It may neither be imparted to a third party, nor otherwise be used without authorization. Infringement hereof will be subject to action in accordance with the applicable laws. Further copies of this document can be obtained from Robot System Products AB at current prices.



Don't forget to order our
complete **PRODUCT RANGE** catalog &
seperate **GRIPPERS** catalog

© Robot System Products AB. Article number: M9002-1_4



Robot System Products AB
Isolatorvägen 4
SE-721 37 Västerås
Sweden
Phone: +46 (0)21 81 66 00
Fax: +46 (0)21 81 66 01
www.rsp.eu.com

rsp robot system
products