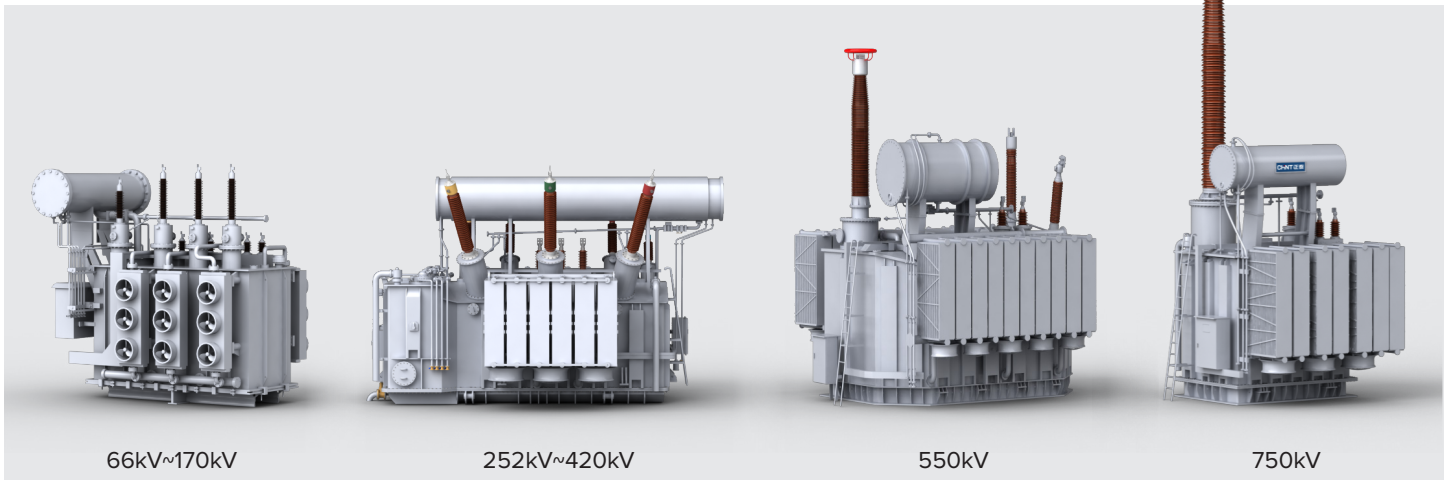


# NOARK



**CHNT** POWER TRANSMISSION AND DISTRIBUTION

## High Voltage Power Transformers



### Oil-Filled Transformers

- Ratings:**
- Voltage up to 750kV
  - Three Phase Capacity: up to 1200MVA
  - Single Phase Capacity: up to 400MVA
- Features:**
- Compact, lightweight, low noise
  - High short circuit and insulation value ratings
  - Fast deliveries and world class project management
  - Custom engineering available on request
- Standards:**
- IEC 60076-1, IEC 60076-2, IEC 60076-3, IEC 60076-5
  - IEEE C57.12.00

### Natural Ester Oil-Filled Transformers

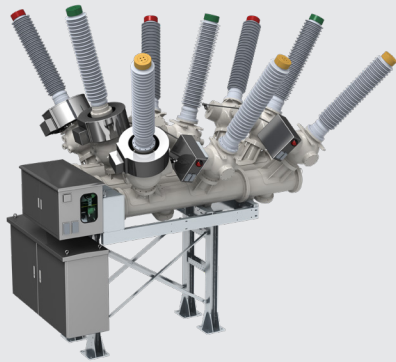
- Ratings:**
- Voltage up to 220kV
  - Three Phase Capacity: up to 240MVA
  - Single Phase Capacity: up to 400MVA
- Features:**
- Eco-friendly insulating oil
  - Compact, lightweight, low noise
  - High short circuit and insulation value ratings
  - Fast deliveries and world-class project management
- Standards:**
- IEC 60076-1, IEC 60076-2, IEC 60076-3, IEC 60076-5
  - IEEE C57.12.00

## Pad Mount Transformers

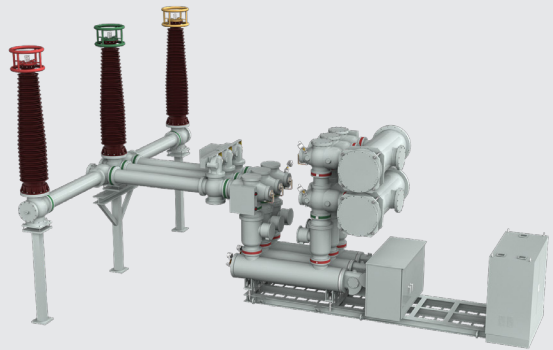


- Ratings:**
- Voltage range 6kV ~ 35kV
  - Capacity: 200 ~ 10000 kVA
- Features:**
- Pad Mount Transformer consists of a HV and LV operating room and a transformer housing. Operating room built-in HV and LV terminals, Load Breaker Switch, Tap changer and Pressure release valve, Oil level gauge, Thermometer etc.
  - The HV side is protected by dual fuses (backup fuses and plug-in fuses) for safety and reliability.
  - HV Load Breaker Switch – radial or loop feed connection.
  - Small footprint – transformer body, Load Breaker Switch, Fuse, Tap changer, etc. are all placed in the tank, with high integration and improved space optimization.
- Standards:**
- IEEE C57.12.00, C57.12.28, C57.12.34, C57.12.90

## HV GIS Dead Tank Circuit Breakers



145kV GIS



252kV GIS

- Ratings:**
- Voltage range 72.5kV ~ 252kV
  - Capacity: 3150A, 4000A
- Features:**
- **Compact Structure:** The three-phase common box connection method of the main bus, and the other three-phase individual box connection method, with the standard bay spacing is 2m and the minimum bay spacing is 1.8m.
  - **High Reliability:** The electrical life of the Circuit Breaker is 22 cycles, the mechanical life is  $\geq 10000$  cycles, with C2-E2-M2 tier model of linkage performance.
  - **Low Leakage Rate:** The butt flange surface is specially designed for double sealing structure, and its annual gas leakage rate is  $\leq 0.1\%$ , which effectively reduces the risk of gas leakage.
  - **Low Partial Discharge:** Under 80% power frequency withstand voltage, the insulation is less than 2pc, and the partial discharge value of the whole bay is less than 5pc.
  - The product is solely designed to be with the relevant sensor to realize the on-line monitoring and one key sequence control of the mechanical characteristics of the Circuit Breaker, gas, density, micro-moisture, partial discharge, etc.

## Vacuum Circuit Breaker



NV1 series



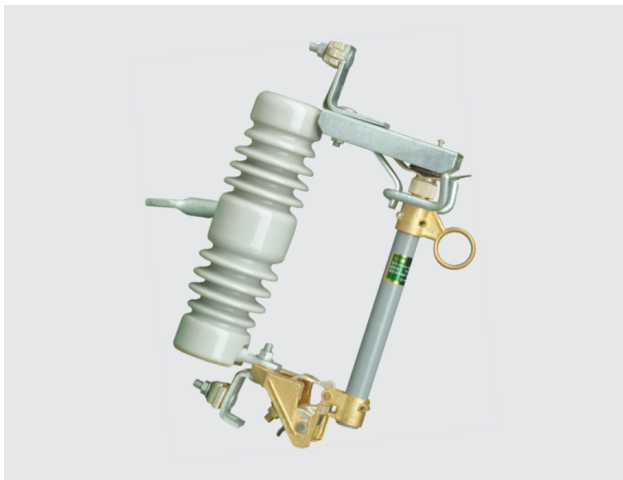
NV2 series



ZN85 series

- Ratings:**
- Voltage up to 40.5kV
  - Capacity: 630A, 1250A, 1600A, 2000A, 2500A, 3150A, 4000A
  - BIL up to 185kV
- Features:**
- Rated short-circuit breaking current: up to 31.5kA/4sec.
  - Ambient air temperature:  $-25^{\circ}\text{C} \sim +40^{\circ}\text{C}$
  - Altitudes up to 2000m
- Standards:**
- IEC 62271-100

## Fuse Cut-Outs



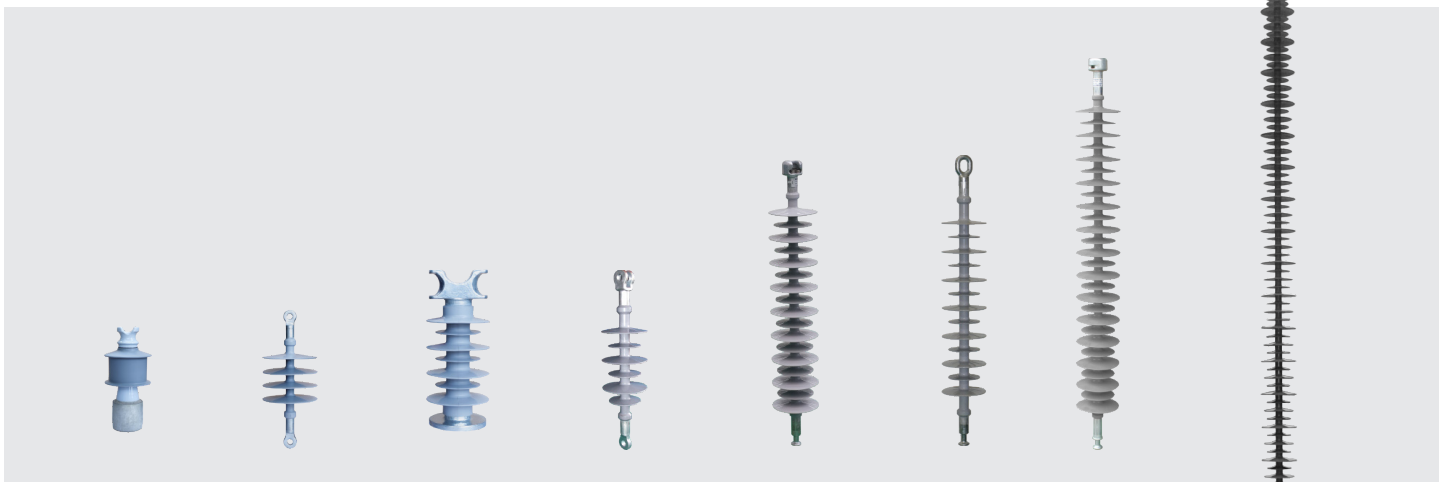
- Ratings:**
- Voltage from 12kV to 36kV
  - Capacity: 100A, 200A, 300A
  - BIL up to 200kV
- Features:**
- High mechanical strength insulator
  - Stainless steel spring, silver plated contacts
  - Hook for load break portable tool
  - Bronze fuse holder cutout components
  - Galvanized steel hardware and NEMA bracket
- Standards:**
- IEC 60282-2
  - ANSI C37.42

## Surge Arrester

- Rating:**
- 0.22 ~ 500kV (porcelain); 0.22 ~ 220kV (composite)
  - Metal oxide polymer housing (Gapless): 5kA series, 6kV – 36kV
  - Metal oxide polymer housing (Gapless): 10kA series, 6kV – 200kV
  - Metal oxide polymer housing (Gapless): 20kA series, 108kV – 200kV
  - Metal oxide porcelain housing (Gapless): 5kA series, 6kV – 36kV
  - Metal oxide porcelain housing (Gapless): 10kA series, 6kV – 200kV
  - Metal oxide porcelain housing (Gapless): 20kA series, 108kV – 444kV
- Features:**
- Available in silicone polymer or porcelain housing
  - High BIL ratings
  - Altitudes up to 2000m
  - Ambient air temperature: -40°C ~ +40°C
- Standards:**
- IEC 60099-4
  - ANSI C62.11



## High Voltage Insulators



- Ratings:**
- Polymeric Long Rod type: 12kV to 500kV
  - Polymeric Pin Insulator type: up to 36kV
  - Polymeric Post Insulator type: up to 252kV
- Features:**
- Mechanical load ratings up to 120kN
  - Ambient air temperature: -50°C to +50°C
  - High BIL ratings
  - Altitudes up to 3000m
- Standards:**
- IEC 61446: 61109; 66217; 66231
  - ANSI C29.13





CHINT Group is one of the largest electrical manufacturing groups in Asia with over 50 thousand employees and sales revenue of \$22 billion USD. After four decades of global growth, the company is now present in over 140 countries and regions worldwide. The CHINT Group is committed to global growth by providing innovative products and technical services, and in delivering localized service, optimizing supply chains, and fostering ecological sustainability.

CHINT Transmission and Distribution (T&D) is a subsidiary of CHINT Group Corporation and is a onestop solutions provider of high-voltage and medium-voltage products for power transmission and distribution projects. With decades of industry experience, comprehensive after-sales service, and a competitive lead time, CHINT Transmission and Distribution can ensure your project is performing to its maximum potential.



NOARK Electric is a global manufacturer of low-voltage electrical components for industrial applications. We specialize in providing electrical circuit protection and motor control solutions for OEMs, contractors, and distributors. Our mission is to provide customers with the highest quality products at an exceptional value and back them with world-class service and support. Almost every NOARK product is tested and certified to the highest industry standards and covered by our exclusive five-year limited warranty. NOARK is a wholly owned subsidiary of CHINT Group, one of the largest electrical manufacturing groups in Asia. We have corporate facilities in Los Angeles, Shanghai and Prague to service the requirements of individual markets and countries.

The IEEE logo, consisting of the letters "IEEE" in a bold, white, sans-serif font.



**AND MORE!**



# GLOBAL CAPACITY

**CHINT is a leading global provider of smart energy solutions, with an extensive network in over 140 countries and regions.**



**4**

**International R&D Centers**

North America, Europe,  
Asia Pacific, North Africa

**6**

**Worldwide Marketing Territories**

Asia Pacific, Western Asia and  
Africa, Europe, Latin America,  
North America, China

**26**

**Manufacturing Plants**

Including: China (Wenzhou, Shanghai,  
Hangzhou, Jiaxing, Xianyang, Jinan),  
Thailand, Singapore, Vietnam,  
Malaysia, Cambodia, Egypt  
and Algeria

**20<sup>+</sup>**

**International Logistics Centers**

**40<sup>+</sup>**

**Global Subsidiaries**

**2300<sup>+</sup>**

**Channel Partners**

**NOARK**

NOARK Electric North America  
2188 Pomona Blvd.  
Pomona, CA 91768

Tel: 626-330-7007  
Fax: 626-330-8035  
nasales@noark-electric.com

For T&D products,  
TDSales@noark-electric.com